

SLVWD – SVWD Joint Board Meeting

May 19, 2016



SVWD 2015 UWMP Update

Main components of regional interest

- Population Projection
- Demand Projection
- Potable and Recycled Water Supplies
- Water Shortage Contingency Planning

Population & Demand Growth

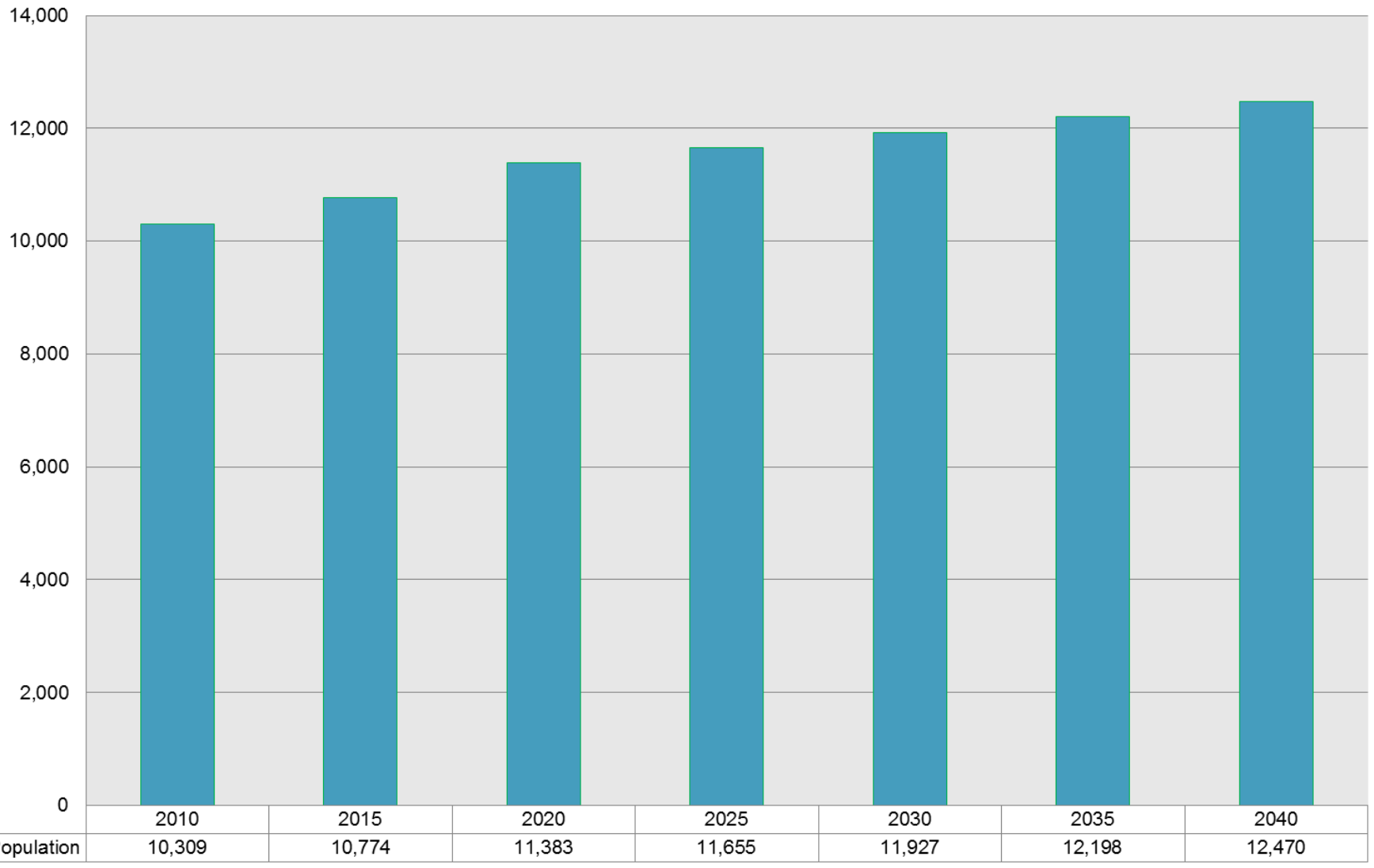
SVWD 2015 UWMP Update

- Current service area population 10,774
- 2040 projected service area population 12,470
- 2015-2020 demand projection
 - Based on the Development Projects with existing Service Applications with District
 - Based on 75GPCD for SFR, 45GPCD for multires
- 2020-2040 demand projection
 - Based on potential projects in the pipeline

SVWD 2015 UWMP Update

2010, 2015 & Projected Population

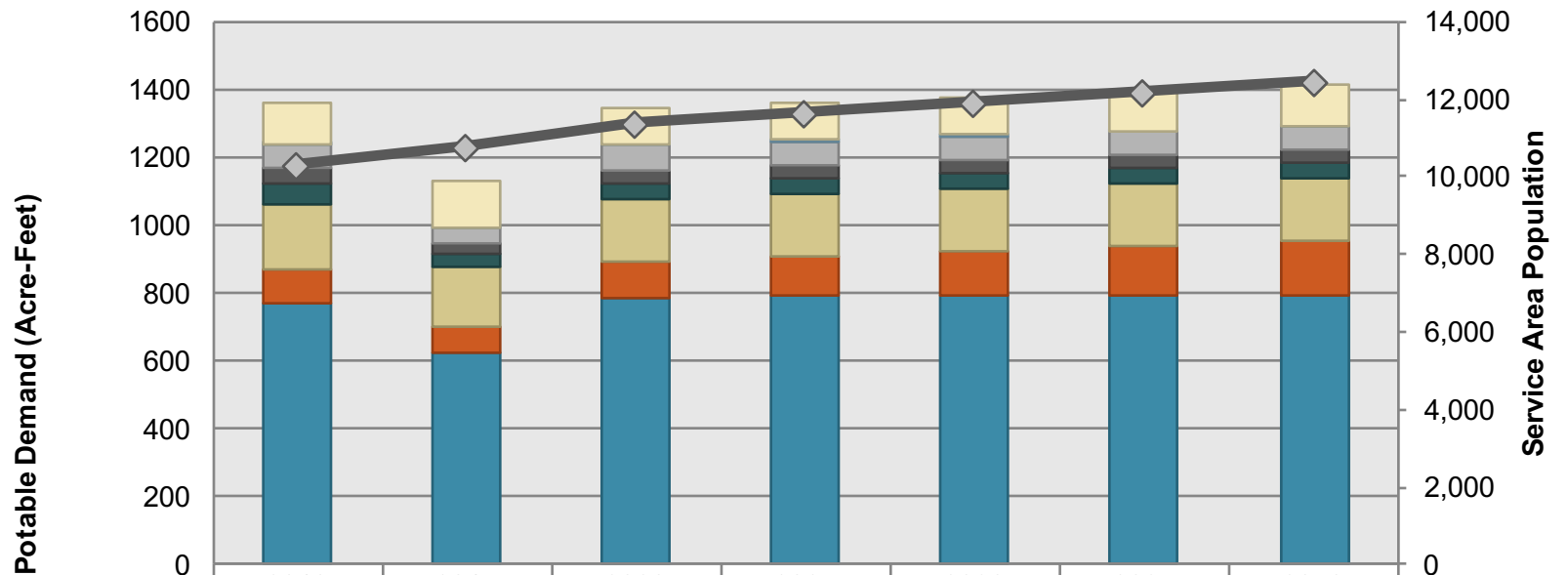
DRAFT



SVWD 2015 UWMP Update

DRAFT

2010, 2015 & Projected Potable Demand & Population
 (Projected with "Rebound" to Average Demand of 2010-2015)



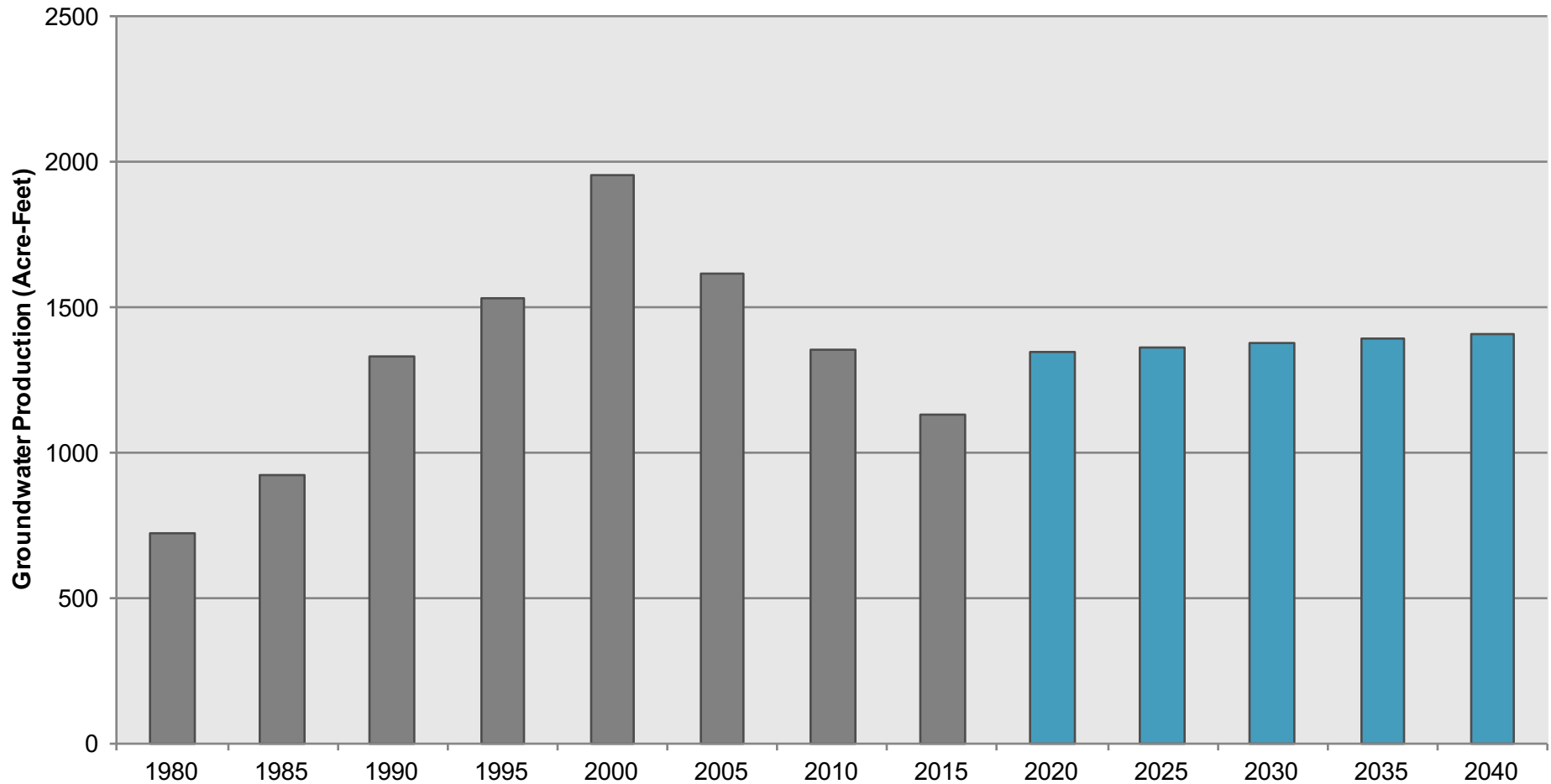
	2010	2015	2020	2025	2030	2035	2040
Loss	118	138	111	113	114	115	116
Fire/Other	1	1	2	2	2	2	2
Landscape Irrigation - Potable	68	49	70	70	70	70	70
Govt/Institutional	48	26	40	40	40	40	40
Industrial	63	38	45	45	45	45	45
Business	187	178	186	186	186	186	186
Multi Family	101	76	105	118	131	143	156
Single Family	772	627	788	790	791	793	795
Service Area Population	10,309	10,774	11,383	11,655	11,927	12,198	12,470

SVWD 2015 UWMP Update

Groundwater Production Historical and Projected

DRAFT

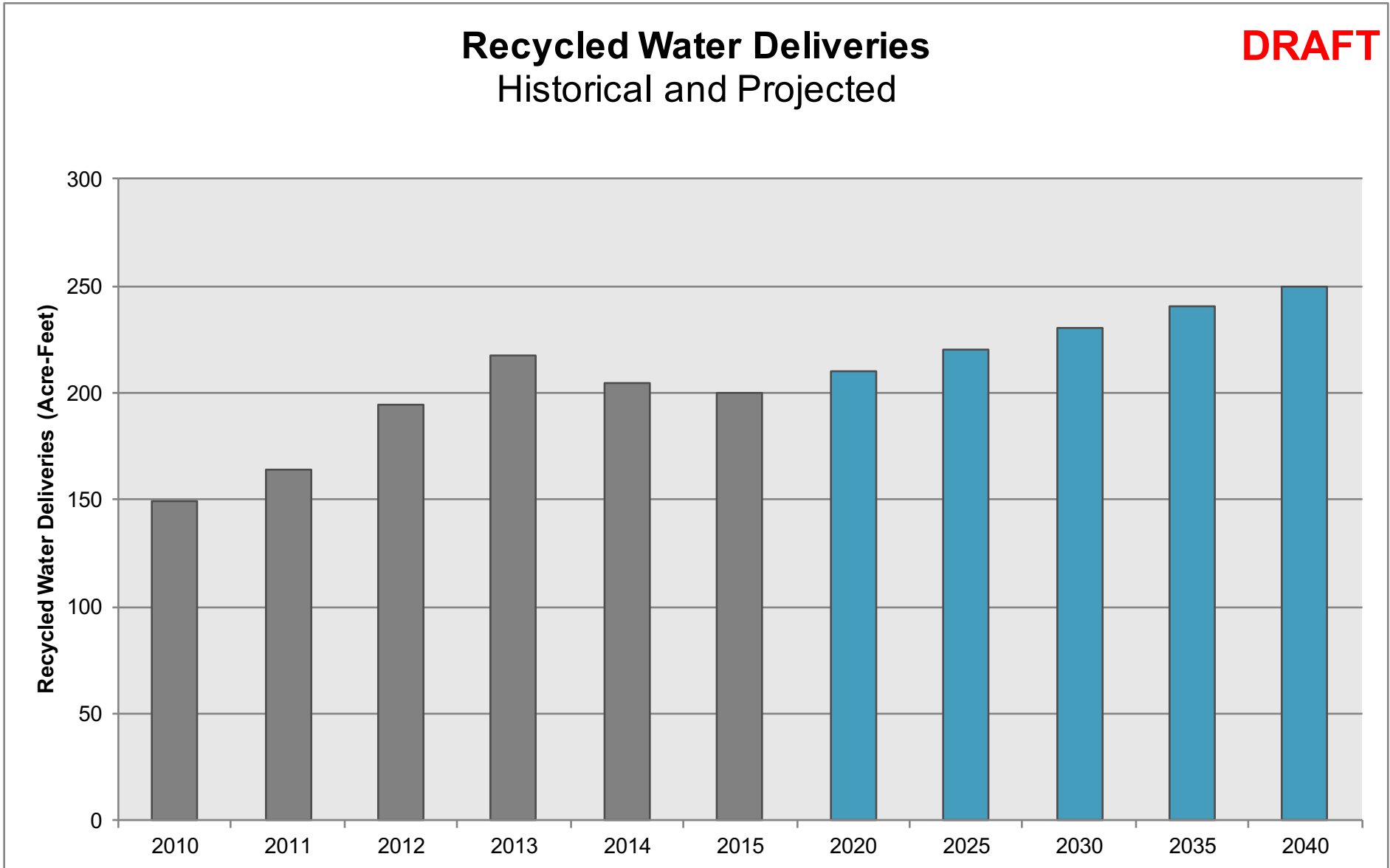
(* 2020-2040 shown with some "rebound" in demand, assumed 9% system loss)



SVWD 2015 UWMP Update

Recycled Water Deliveries
Historical and Projected

DRAFT



Water Shortage Contingency Plan

SVWD 2015 UWMP Update

- Water Shortage Contingency Criteria
 - Goal to prevent substantial decline of GW levels
 - Rainfall data is most direct method
 - GW level data more complex
 - Varies in different aquifers
 - Impacted by other pumpers
- Update 2010 UWMP Criteria
 - Did not trigger mandatory reductions last 4 years
 - Include GW level modifier

Proposed Water Shortage Stages

SVWD 2015 UWMP Update

Stage	Proposed Precipitation Condition	System Demand Reduction Level
1	Cumulative 2-Year Rainfall <80% of average, or Single Year rainfall <75% of average	10% demand reduction
2	Cumulative 2-Year Rainfall <70% of average, or Single Year rainfall <60% of average	15% demand reduction
3	Cumulative 3-Year Rainfall <70% of average, or Single Year rainfall <50% of average	20% demand reduction
4	Stage 3 water supply conditions based on precipitation with groundwater levels below range	25% demand reduction

- GW Level Modifier: adjust stage (up/down) based on spring gw levels relative to historic low level
- Reductions from baseline of average demand of last 5 years with > 80% of precipitation

SVWD Supply and Demand

2016 Supply Status

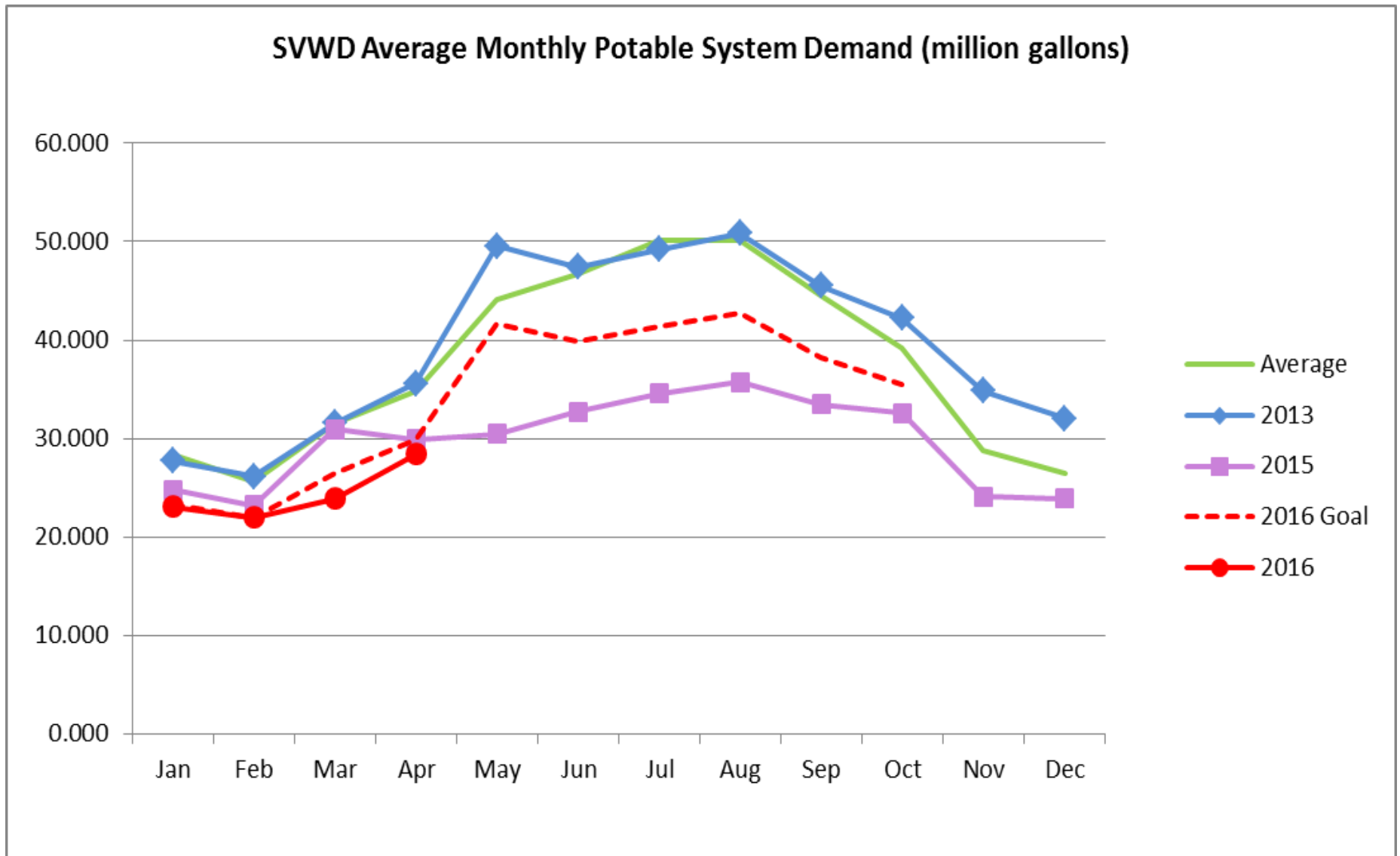
- Rainfall 42.08 inches
- 101% of average
- 85% of 2-year cumulative average
- 73% of 3-year cumulative average

2015 Annual GW Report – gw levels relatively stable (2-3 ft drop 2011-2015 in Lompico)

2014 total system demand reduction 17%

2015 total system demand reduction 24%

SVWD Potable System Demand



Santa Margarita GW Basin

Scotts Valley Sub-Basin Demand-Supply Balance

	2012	2015	Theoretical Max Balance
SVWD	1361	1133	1622
SLVWD	387	310 *	461
MHA	174	174 *	207
Others	259	259 *	309
Total Pumping (AFY)	2181	1876	2600
Sustainable Yield (AFY) **	2600	1820	2600
* Estimated figures			
** Without GW recharge			

Hypothetical:
30% Reduction
Due to Drought

SVWD 2016 Water Efficiency Program

- To meet the requirements of Governor's Executive Order B-37-16 modifying and extending 2015 regulations for urban water suppliers through January 2017
- Think Twice Program (June 2016-Jan 2017)
 - Weekly Irrigation Schedule
 - District and State Rebates
 - Water Waste Watch