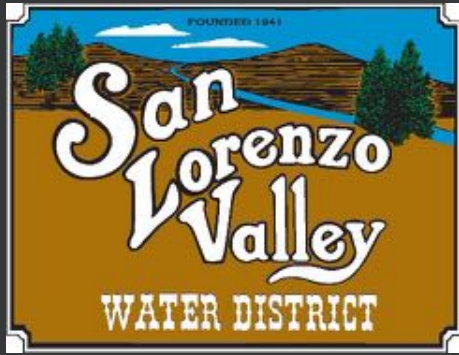


San Lorenzo Valley
Water District

WSC On-Call
Engineering Services



Presented By: Kirsten Plonka, PE
Justin Sutton, MCRP

Board of Director's Meeting

July 20, 2017

Discussion Topics

1. History and Background
2. Who We Are
3. WSC's Role with the District
4. Relationships, Knowledge, and Insight with District
5. Current Efforts
6. Funding & Financing Support
7. Questions and Answers

1. History and Background

- Aging infrastructure
- Fire danger, landslides, and earthquakes
- Drought
- Acquired systems
- Fiscally and Environmentally Responsible Board and Customer Base
- Renewed passion for making progress on infrastructure needs
- Interest in outside funding



2. Who We Are

WSC has been recognized as one of the **Fastest-Growing Firms** two years in a row by *Inc. Magazine*, as well as one of the **Best Places to Work** in 2017.



Our clients recognize WSC as a **partner** and continue to choose us for their complex needs, year after year.



WSC provides a **full spectrum** of engineering services for water projects throughout the Pacific Northwest and California.



We have **seven offices** serving clients throughout the West Coast.



Expect WSC: *Personalized Service. Sustainable Solutions. Exceptional Value.*



We currently provide staff augmentation services to over **35 clients**.

2. Who We Are



PLANNING



DESIGN



**PROGRAM
MANAGEMENT**



**OPERATIONS
ASSISTANCE**



**FUNDING &
FINANCING**



**CONSTRUCTION
MANAGEMENT**

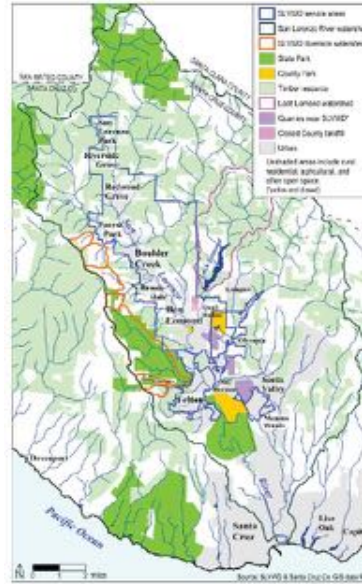
3. WSC's Role with the District

- June 2017 approved Agreement for Engineering As-Needed Services
- Extension of staff
- The GM is the Responsible Engineer-In-Charge for the District
- Need for additional support due to upcoming projects and workload
- WSC has worked with SLVWD on multiple projects in the past and has ability to support the District meet their goals.

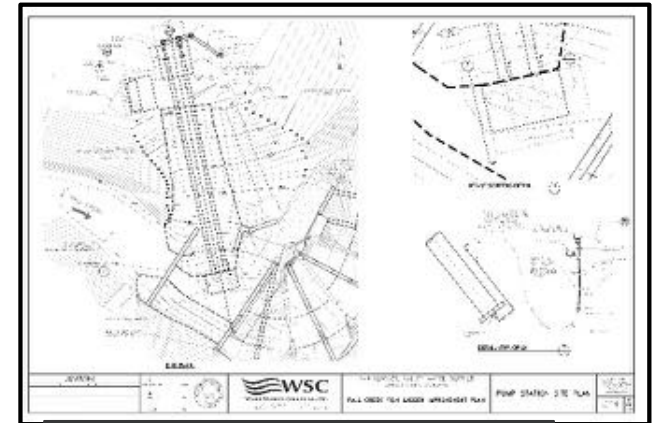


4. Relationships, Knowledge, and Insight with District

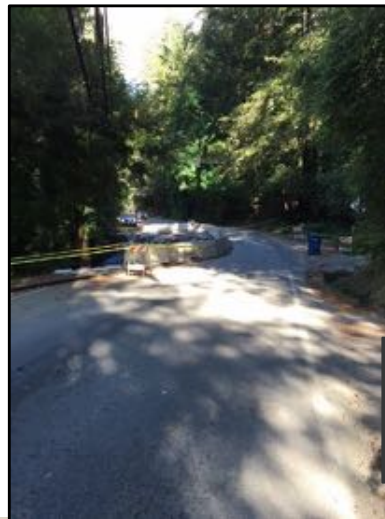
- Successful working relationships
- Enables efficient collaboration
- Public agency experience
- Successful funding experience



2015 Urban Water Management Plan



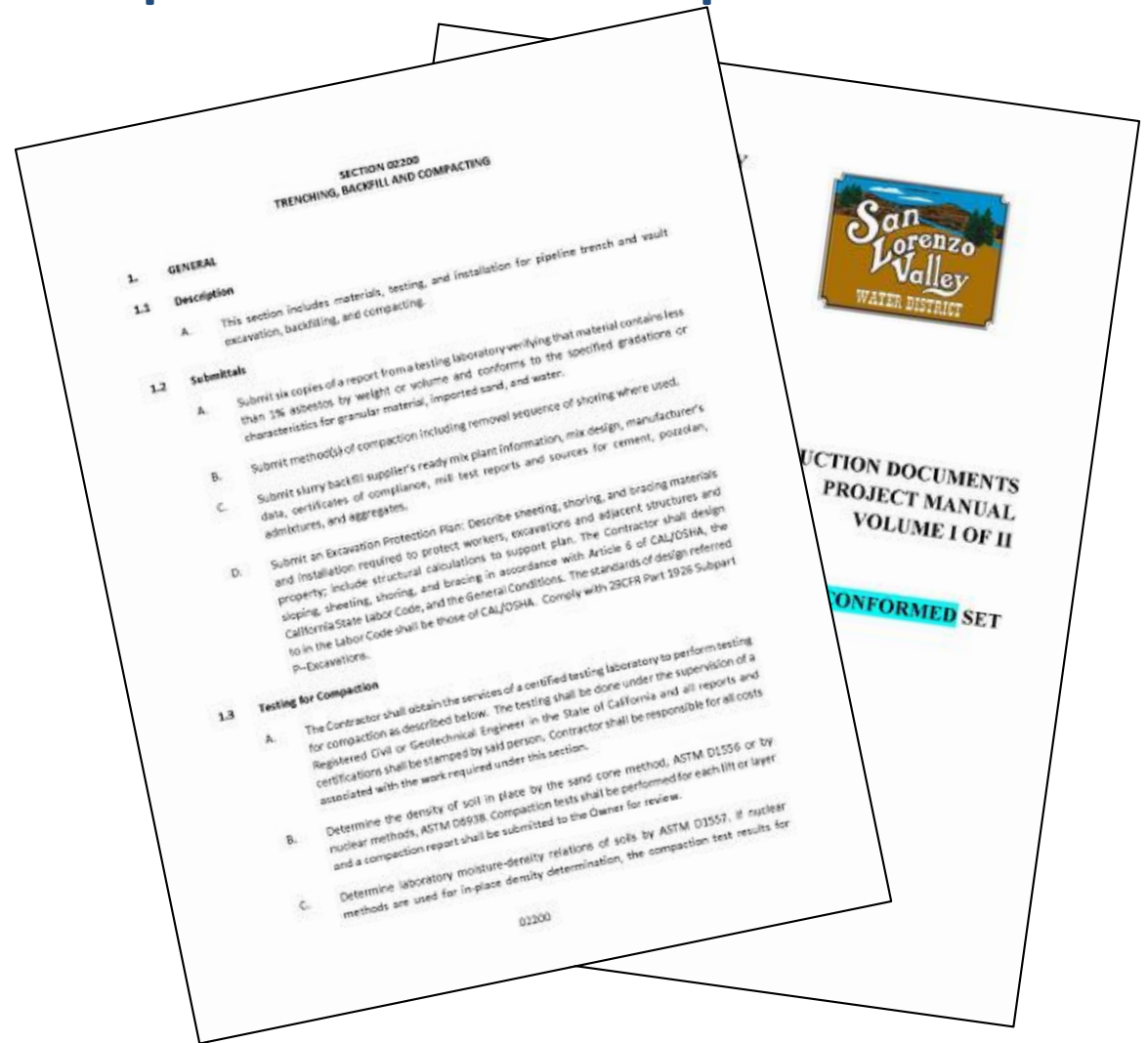
Fall Creek Pumping Station Intake Design



Bear Creek Road Water Main Plan

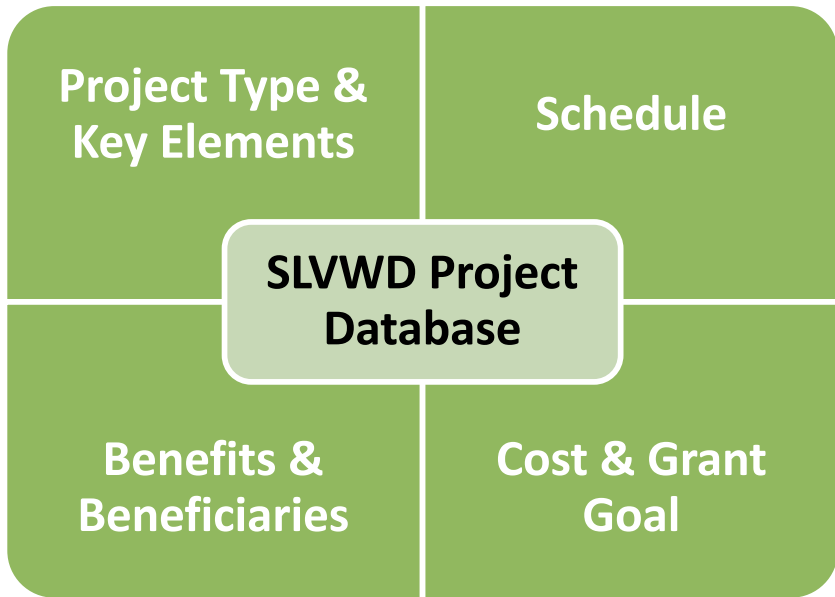
5. Current Efforts – SLVWD Standard Specification Update

- Standards required to ensure proper design and construction
- With multiple projects coming up, new, revised standards and legal contract language is necessary to limit risk by the District
- Standard front-end documents for bids will reduce cost for projects because they can be used again and again
- Starting with common standards used by other agencies so SLVWD isn't paying to reinvent the wheel

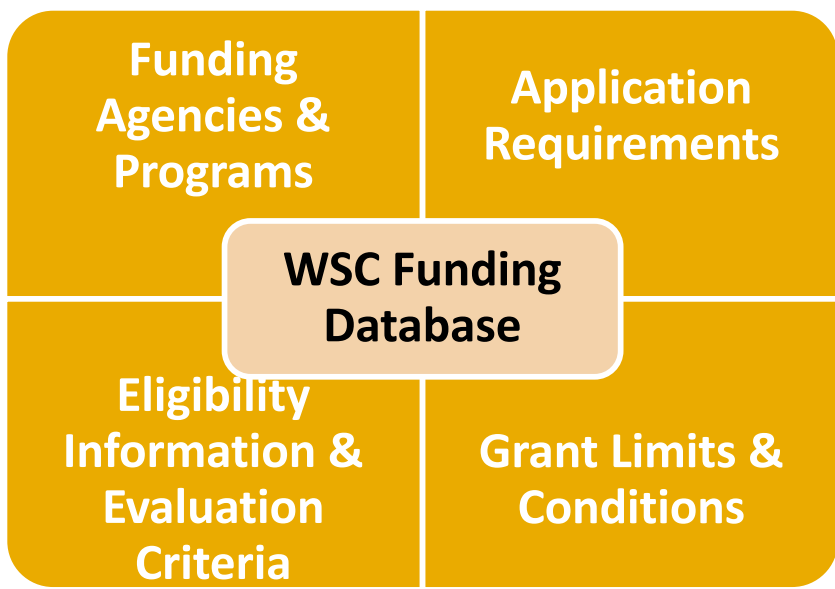
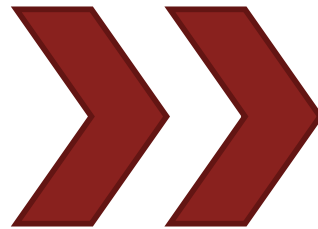


6. Funding & Financing Support





1



2

3

Prepare Competitive Applications

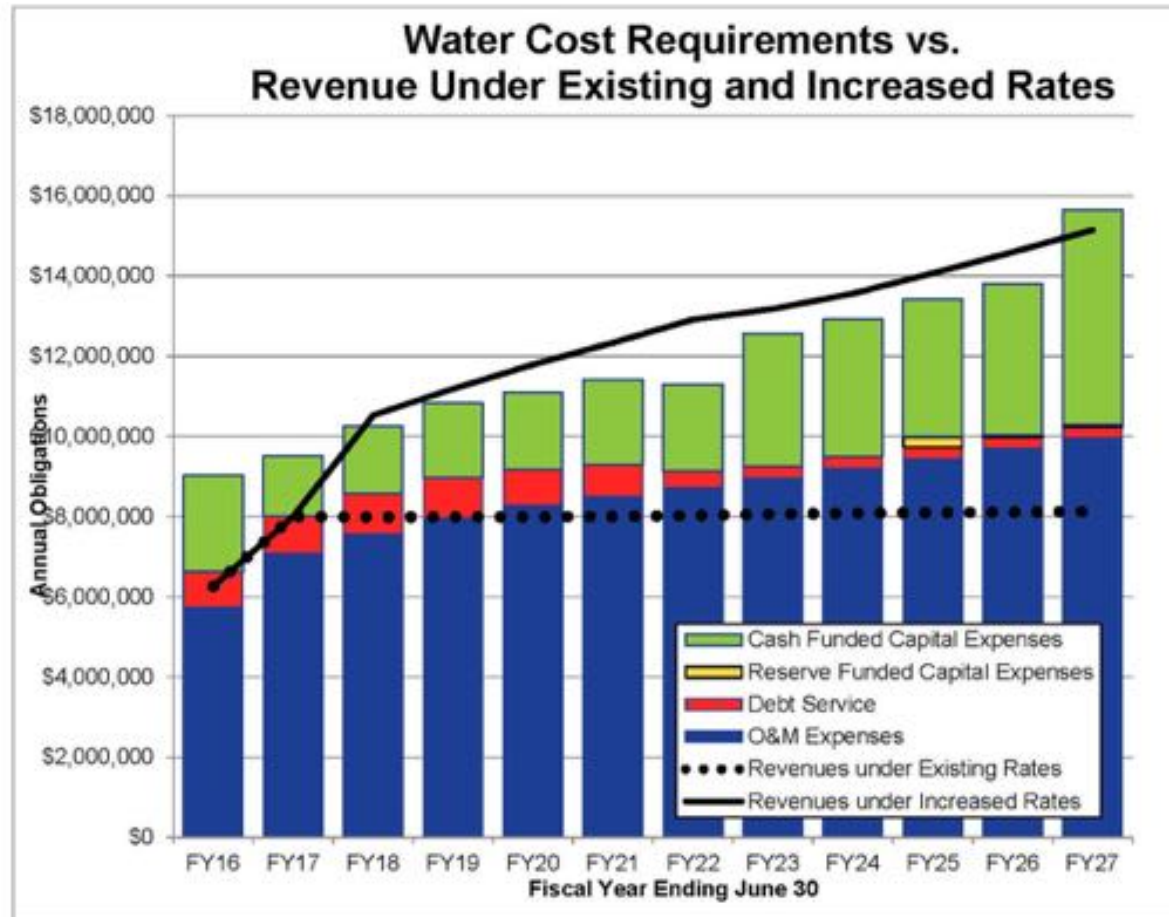
- Compile and generate supporting documentation
- Align application with guidelines
- Prioritize information requests from funding agencies to address comments
- Collaborate for competitiveness

4

Streamline Funding Administration

- Collaborate to develop a reporting and documentation plan that works
- Consistently and transparently communicate with funding agreement representative

Funding & Financing Support



- SLVWD will benefit from outside funding and/or low interest loans to complete the necessary system improvements on-time.

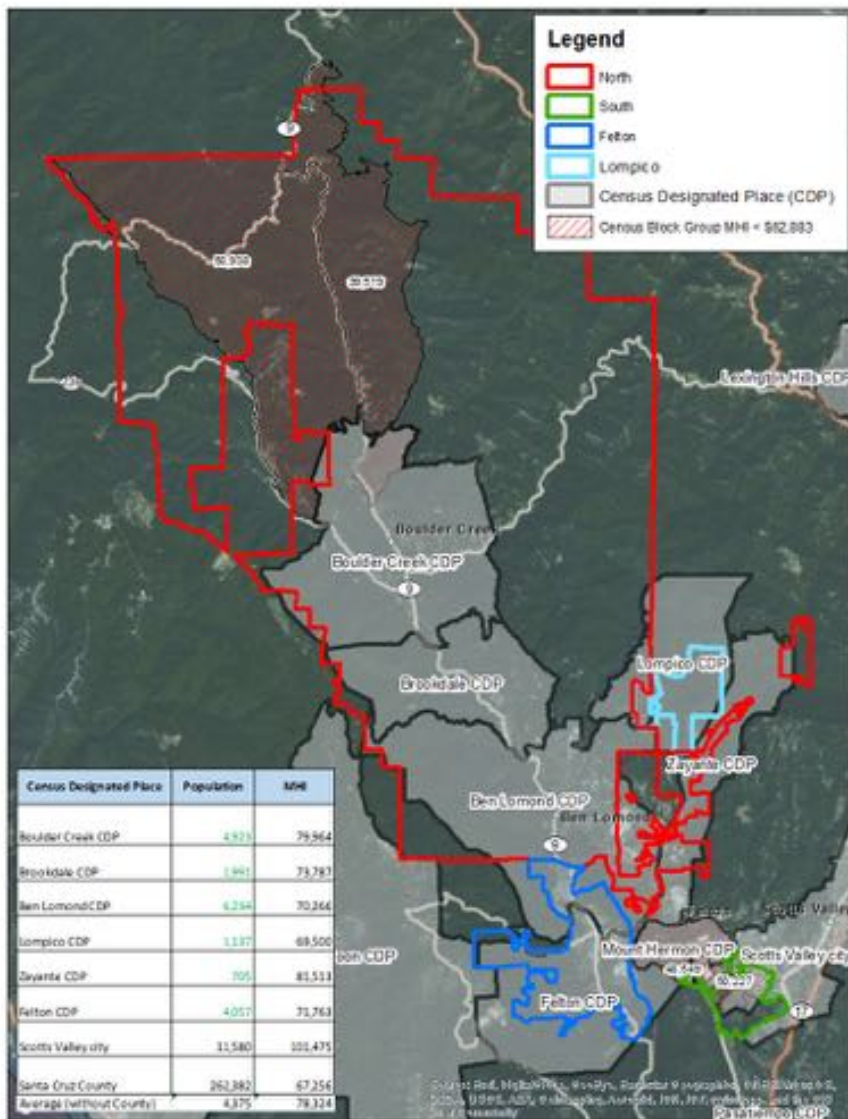


USDA & DWSRF Funding



	USDA	DWSRF
Purpose	Provide funding for clean and reliable drinking water systems, sanitary sewage disposal	Assist public water systems in financing the cost of drinking water infrastructure projects.
Eligibility	Applications accepted on a continuous basis. Loan - Population less than 10,000. Grant – Median Household Income less than \$62,883	Applications accepted on a continuous basis and placed on a comprehensive list and projects are prioritized by the project benefits
Eligible Projects	Drinking water sourcing, treatment, storage and distribution; Sewer collection, transmission, treatment and disposal.	Treatment, distribution, interconnections, consolidations, pipeline extensions, water sources, and water meters.
Loans	Long-term (up to 40 years), low-interest (~ 2.625%) loan.	20 years or up to 30 years at ~1.7%
Potential SLVWD Borrow Amount	\$10M - \$15M	\$8M - \$13M
Funding Limit	No cap	No cap
Application Review	Approximately 60 - 90 days.	Approximately 9 months
Environmental Requirements	CEQA & NEPA	CEQA Plus
Programmatic Approach	Yes	No

SLVWD Eligibility for USDA and Next Steps



Next Steps:

- Meet with USDA representatives
- Review Rate Study and Prioritized CIP – Develop preliminary program budget and schedule
- Lay out a strategy for using USDA dollars to address SLVWD's most pressing problems
- Complete USDA Application

USDA Funding Process

- Applications accepted on continuous basis
- Application Components
 - Preliminary Engineering Report
 - Environmental Compliance (CEQA/NEPA)
 - SLVWD Financial Capability
- USDA Conditions
- Agreement



Funding Experience

\$25,159,200

IN AWARDED GRANTS &
LOW INTEREST LOANS

\$2,470,000

IN FORGIVEN PRINCIPAL LOANS

IN THE PROCESS OF
ATTAINING MORE THAN

\$140M

IN ADDITIONAL FUNDING

“WSC was instrumental in assisting DWP in obtaining USDA funding (Low Interest Loan and Grant) to make this important water infrastructure project possible.”

-Mr. Reginald Lamson, PE, LS, General Manager, Big Bear Lake Department of Water and Power

WSC’s team of experts has secured funding for the following clients:

- ✓ City of Big Bear Lake DWP
- ✓ Big Bear Area Regional Wastewater Agency
- ✓ City of San Luis Obispo
- ✓ City of Pismo Beach
- ✓ South San Luis Obispo County Sanitation District
- ✓ County of San Luis Obispo
- ✓ Northern Cities Management Area (Cities of Grover Beach, Arroyo Grande, Pismo Beach, & Oceano CSD)
- ✓ Heritage Ranch CSD
- ✓ Cayucos Sanitary District
- ✓ Avila Beach CSD

7. Questions and Answers

San Lorenzo Valley
Water District

WSC On-Call
Engineering Services



Presented By: Kirsten Plonka, PE
Justin Sutton, MCRP

Board of Director's Meeting