



MINUTES OF ENVIRONMENTAL COMMITTEE MEETING

Responsible for matters of stewardship of the District's property including: Urban Water Management Plans; Water Conservation Programs; Classis Watershed Education Grants; Watershed Management; Resource Management and other environmental related matter.

Thursday, February 20, 2020 9:45am at the Operations Building, 13057 Highway 9, Boulder Creek, California.

MINUTES

1. Convene Meeting 9:45 a.m.
Roll Call: J. Supp, D. Herbst, R. Moran and E. Fresco were present. K. O'Connor and L. Farris were absent.
Staff: C. Blanchard, R. Rogers and H. Hossack
2. Oral Communications
E. Fresco requested that the Board or DM write a letter to PGE encouraging them to use insulated power lines in this high risk area.
R. Rogers said that this is not on the agenda so there can be no discussion. He said he will review the information and take to March 5th BoD meeting.
3. Old Business:
 - A. REVIEW STATEMENTS OF QUALIFICATIONS RECEIVED FOR FIRE MANAGEMENT
R. Moran introduced this item.
Tanya Treis, Panorama Environmental, introduced herself and presented Panorama's qualifications. (Scott Conway, Panorama participated by phone.)
S. Conway presented his qualifications.
T. Treis continued the presentation. She introduced the other Panorama team members.
Discussion by the Committee, staff and Panorama regarding the presentation.
L. Ford, Felton - Volunteer advisor to the District. Suggested that the District is concerned with urban wildfire. Modify the thinking for this plan.
Discussion by the Committee, staff, Panorama and public regarding the scope of this plan and wind-driven catastrophic fire.
C. Baughman, Boulder Creek - agreed with L. Ford. He said there is overlap with Integrated Pest Management.
T. Treis responded to the overlap with Integrated Pest Management.
B. Holloway, Boulder Creek - shared his thoughts.
T. Treis responded that he made a good point.
Discussion by the Committee, staff, Panorama and public regarding maps, water supply for firefighting and prevention of risk of fire.
R. Rogers said he thinks if we try to do too much we won't get very far.

R. Moran noted that the meeting was scheduled to end now but if everyone is okay with it the meeting can continue.

C. Baughman noted that the proposal listed invasive species that have not been surveyed in that property.

T. Treis responded that she had pulled that from a report on-line. The point was that there are invasive species that should be noted.

Discussion by the Committee, staff and public regarding the ban on glyphosate.

Discussion by the Committee, Panorama, staff and public on how to go forward.

R. Moran thanked T. Tries for her excellent presentation.

Discussion regarding strategy and direction to move ahead.

B. REVIEW OF PRIORITY ENVIRONMENTAL AGENDA ITEMS FOR FIRST QUARTER 2020

- Fire Management Plan
- Conjunctive Use/Interties
- 5 Pipelines
- Integrated Pest Management

R. Rogers introduced this item.

Discussion by the Committee and staff regarding the 5 Pipelines and priorities.

4. New Business: None

5. Written Communication:

- Email from T. Sweeney - 2.12.20

R. Moran noted the letter from T. Sweeney.

Discussion by the Committee, staff and public regarding the letter.

6. Informational Material: None.

7. Adjournment 11:24 a.m.



San Lorenzo Valley Water District Fire Management Plan

Tania Treis – Panorama
Jason Moghaddas – SIG
Scott Conway – SIG
Phil Dye – Prometheus Fire Consulting

February 20, 2020



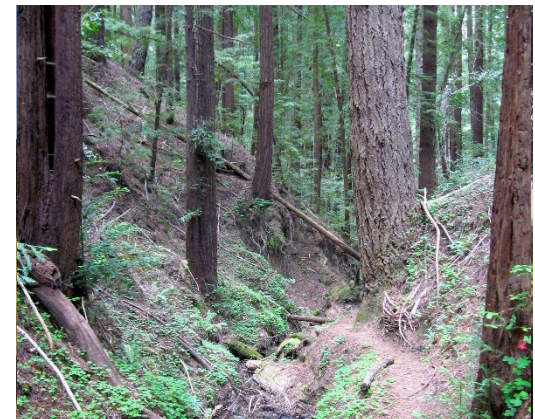
PROMETHEUS®
Fire Consulting Services LLC


Spatial Informatics Group


PANORAMA
ENVIRONMENTAL, INC.

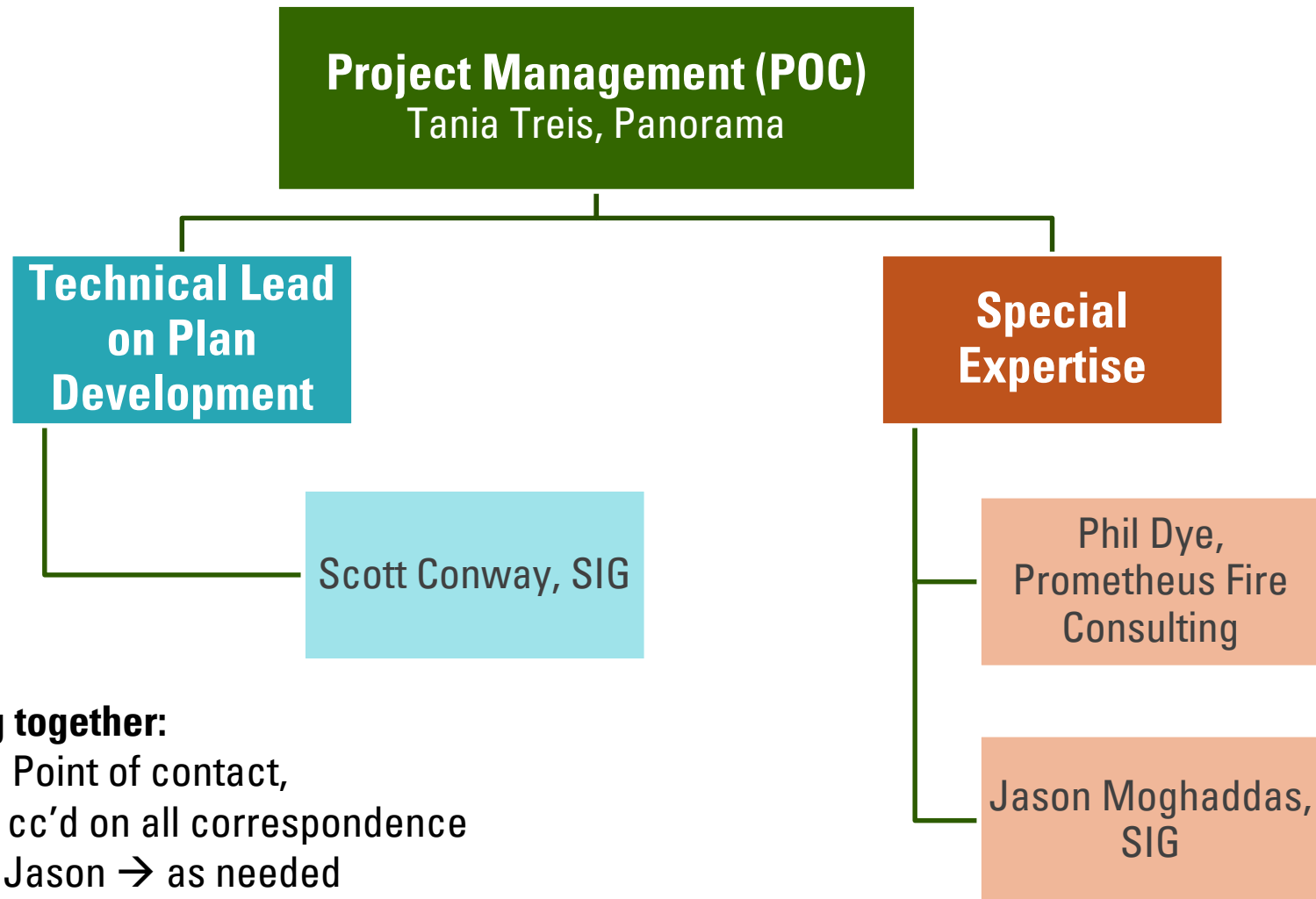
Presentation Overview

- 1 Our Team and Leadership
- 2 Costs and Grants
- 3 Agency Involvement
- 4 Resources to Protect
- 5 Modeling and Assessment Approach
- 6 Timeframe
- 7 Post-fire Planning



Question 1: Leadership and Project Outreach

Unique, but Proven Team Structure



Working together:

Tania → Point of contact,
Scott → cc'd on all correspondence
Phil and Jason → as needed

Question 1: Leadership and Project Outreach

Project Management



Tania Treis

Expertise

- Strategy
- Coordinating teams to achieve end goal
- Project definition
- Outreach
- Environmental (CEQA)
- Water district experience

Marin
Municipal
Water
District

Mid-
peninsula
Regional
Open
Space

Alpine
County

UC San
Francisco
Mount
Sutro

Stanford
University

Question 1: Leadership and Project Outreach

Technical Lead



Scott Conway

Expertise

- 20+ years experience
- Forest Service
- HVRA analyses, modeling, prescription definition
- Pioneered LiDAR and geospatial dataset application solutions

Lower
Yuba
River
Example

Special Expertise



Jason Moghaddas, RPF - SIG

- 20+ years experience
- Registered Professional Forester
- CWPPs: Feather River Land Trust, Plumas National Forest, El Dorado County Fire Safe Council, Midpen, UC Berkeley, Alpine County, Yosemite NP



Phil Dye

- 20+ years experience
- On-the-ground experience with fire and prescribed fire (over 50 projects)

Question 1: Leadership and Project Outreach

Outreach Plan

- Stakeholders, meetings, information
- Examples:
 - Midpen
 - Alpine County
 - Stanford
- We can participate in as many meetings as desired

Table of Contents

1	Introduction	3
1.1	Overview of the Alpine County Wildfire Risk Mitigation Plan	3
1.2	Purpose of this Community and Stakeholder Public Involvement Plan	4
2	WRMP Information Development	6
2.1	Website and Email Address for the WRMP	6
2.2	Fact Sheet/WRMP Information Sheet	6
3	Public Workshops/Meetings	8
3.1	Alpine County Wildfire Risk Mitigation Plan Workshops/Meetings	8
3.2	CEQA Meeting	10
3.3	Public Notification of Workshops	11
3.4	Workshop Comment Tracking	11
3.5	WRMP Mailing List	12
4	Stakeholder Consultation	13
4.1	Key Stakeholders	13
4.2	Stakeholder Outreach Methods and Timing	14
4.3	Stakeholder Map	15
4.4	Stakeholder Tracking and Integration	15
4.5	Community and Stakeholder Input Report	15
5	Schedule	16

List of Tables

Table 1	Workshop/Meeting Locations	8
Table 2	Workshop/Meeting Format	9
Table 3	Meeting # 3 Location	10
Table 4	CEQA Workshop Presentation Agenda Items	10
Table 5	Key Stakeholders	13
Table 6	Public Outreach Schedule	16

Question 2: Costs and Grants

Estimated Costs

Planning Phase

Component/Consideration	Est. Costs
Planning, modeling of fire behavior and HVRAs	\$50,000
Development of Treatments	\$20,000
Development of Report/Plan/Contribution to larger effort	\$30,000
Outreach and Coordination	\$50,000
TOTAL	\$150,000
<i>Assistance with grants</i>	<i>\$10,000+</i>
<i>Full hydrology modeling</i>	<i>\$50,000</i>
<i>Biological/Cultural Review</i>	<i>\$25,000+</i>
<i>CEQA Review (depending on analysis)</i>	<i>\$50,000 - \$250,000</i>

Implementation Phase

Component/Consideration	Est. Costs
Site Surveys and Planning	\$25-100/ac
Mastication/Fuelbreak Creation	\$2,500 - \$8,000/ac
Thinning	\$2,500/ac
Prescribed Fire	\$500 - \$1000/ac

Basis: Alpine County Budget - CALFIRE CA Climate Investments Fire Prevention Grants Program

Question 2: Costs and Grants

Funding Sources and Grant Opportunities

CAL FIRE

- California Climate Investments Fire Prevention Grant Program –
 - Forest Health
 - Fire Prevention
- California Forest Improvement Program (CFIP) - Cost share to private and public ownership for 20 to 5,000 acres

**California Wildlife
Conservation Board**

- \$4.1M in grants under Climate Adaptation and Resiliency Program

FEMA

- Fire Prevention and Safety Program grants

Question 3: Agency Coordination

Agencies to Ask For Assistance and Cooperation

Municipal

City of Santa Cruz
Santa Cruz County

- Environmental Health
- Planning
- County Parks
- Roads

Water Districts

Scotts Valley Water District

Soquel Creek Water District

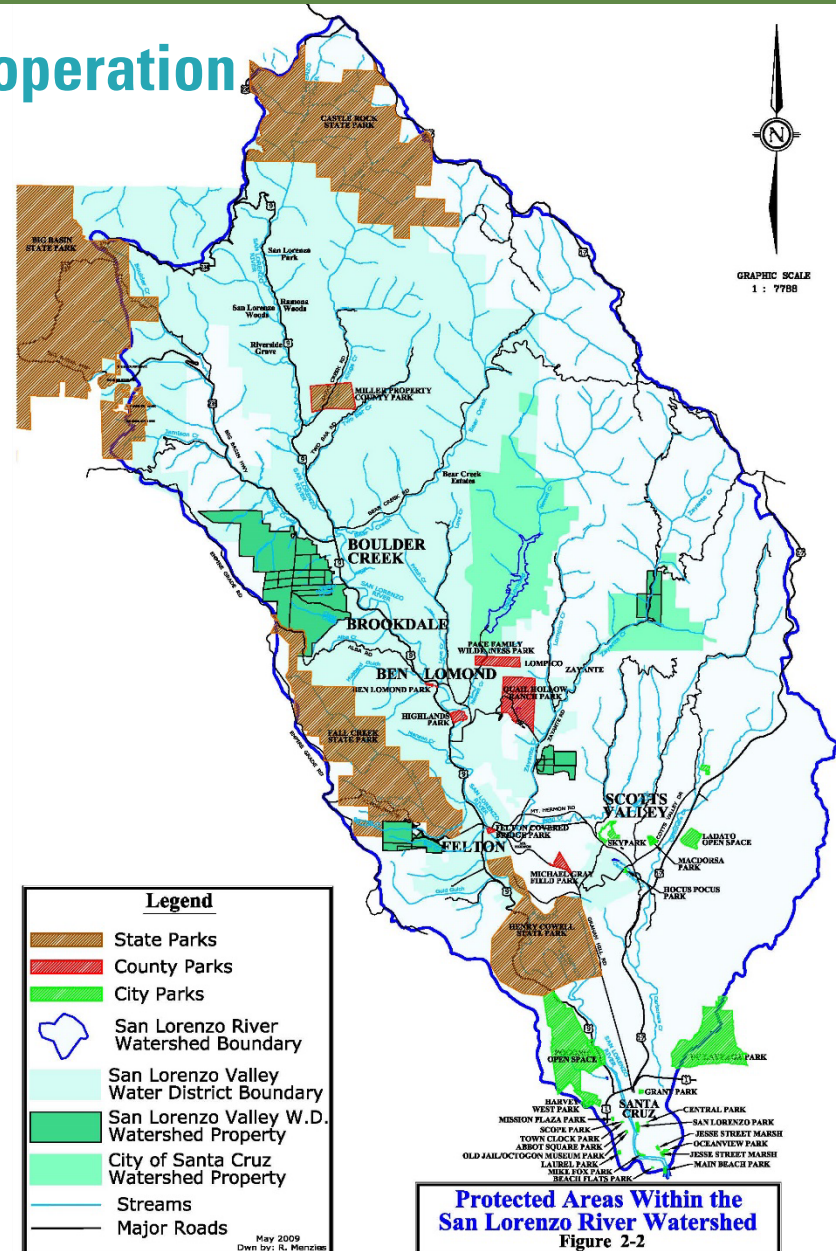
State

State Parks
CALFIRE
Caltrans

Organizations

Fire Safe Santa Cruz County
Santa Cruz Resource Conservation District's (RCD)
Fire Protection Districts

Local Fire PD: Review and feedback on plan – HVRA analysis
CALFIRE: If Rx fire – then intimately involved



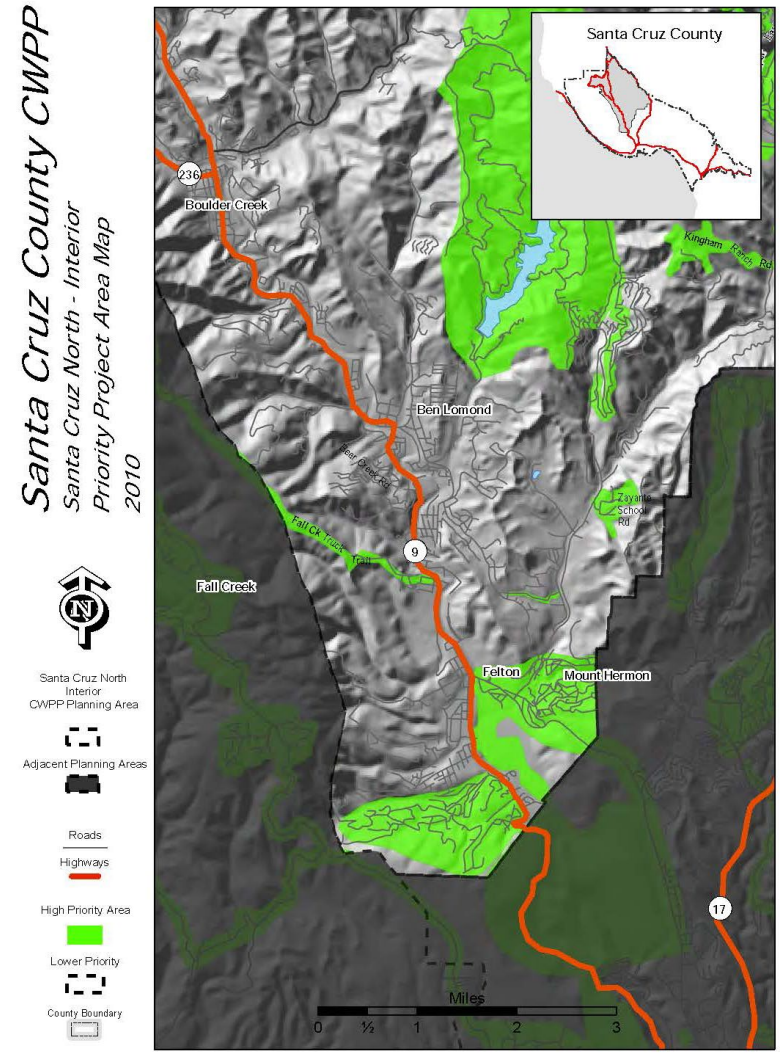
Question 3: Agency Coordination

Existing Fire
Management
Planning to
Reference

- CAL FIRE Vegetation Treatment Plan (VTP)
- 2018 San Mateo – Santa Cruz Community Wildfire Protection Plan (CWPP)

Fire Planning
Efforts to be
Involved In

- CAL FIRE VTP
- State Parks Fire Management Plans
- Others within Watershed



Potential models to follow: North Yuba; Rio Grande Water Fund

Questions 4: Resources and Facilities to Protect

Identifying/Characterizing Water Districts' Interests

HVRA analysis is critical

- Assets discreet and can be accurately mapped
- Better assessment of risk and assignment of mitigations/treatments
- Consider not just facilities but also important natural resources/cultural

How to identify facilities to protect?

- Microsoft building layer
- District help or provide data (data not public)
- CAD converted to GIS – GIS systems used over CAD for sharing
- Inventory structures and determine plan for each for hardening as part of plan

Questions 5: Priorities and Steps

Most Important Steps to Reach Implementation

Hazard Modeling/Risk Assessment

- Determine assets/resources at risk
- Identify priorities

Apply for and Obtain Grants/Funding

Define Treatments

- Assess current planned and previously implemented work
- Define new work to be performed
- Consider resource impacts from work

Environmental Review/Clearances

- Existing or CE v. New CEQA

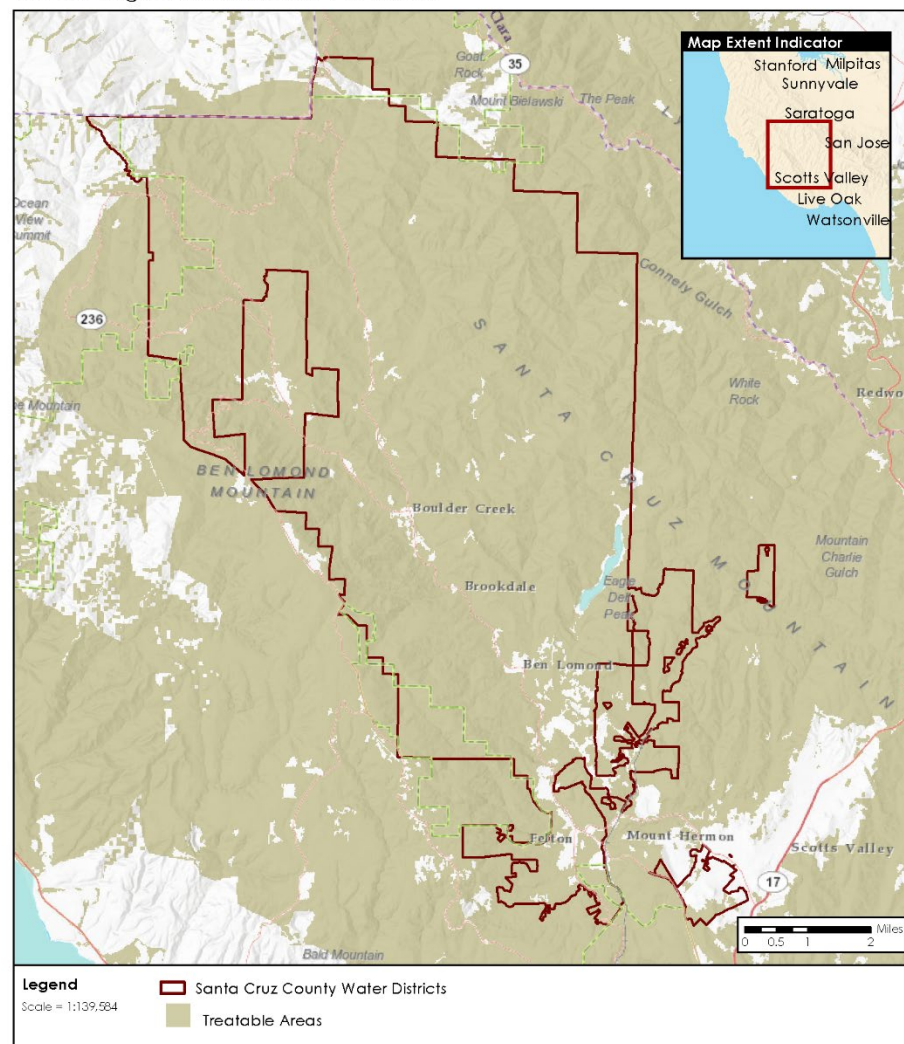


Questions 5: Priorities and Steps

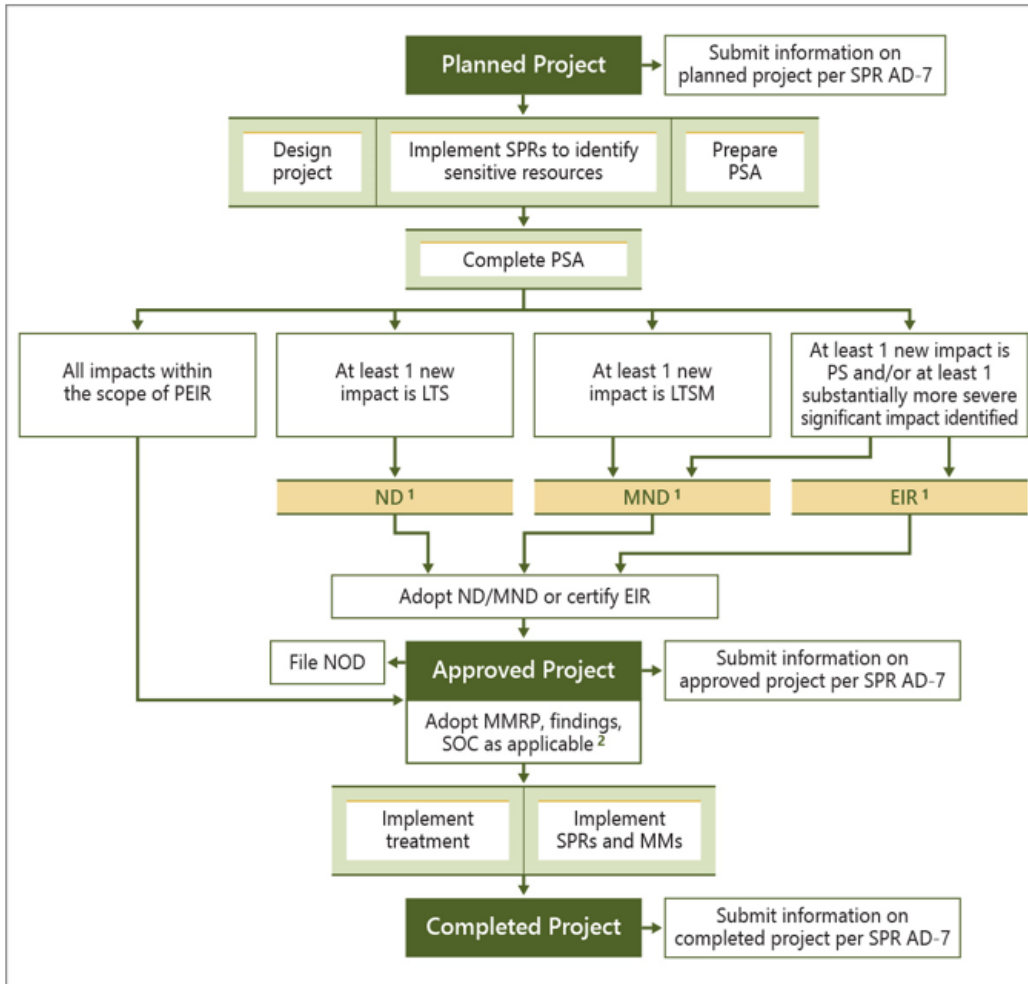
Priorities in Implementation Undertaken before Plan is Completed

- Once understand risk, immediately apply for grants and secure funding – can take 6 mo to 1 yr
- Start in plan identifying work either exempt from CEQA or covered under existing (CALFIRE VTP?) after risk assessment
- Facility hardening/roadside thinning?

San Lorenzo Valley Water District Fire Management
Cal Fire Vegetation Treatment Plan Areas



Questions 5: Priorities and Steps



Project-Specific Analysis

- Treatment Types
 - WUI Fuel Reduction
 - Fuel breaks
 - Ecological Restoration
- Treatment Activities
 - Prescribed burning (pile and broadcast)
 - Mechanical Treatment
 - Manual Treatment
 - Grazing
 - Herbicides
- Which treatment types and activities allowed in area – and if impacts covered using forms in VTP Appendix
 - Identify impacts
 - mitigation from plan

Question 6: Timeframes

Addressing this Fire Season

- Hazard map within a week of contract execution
 - Note: will be missing exposure/HVRAs
 - Problem areas will be evident
- Identify what can be done under existing programs/existing CEQA/Exemptions and re-prioritize
- Surveys of bio/cultural for areas in spring 2020

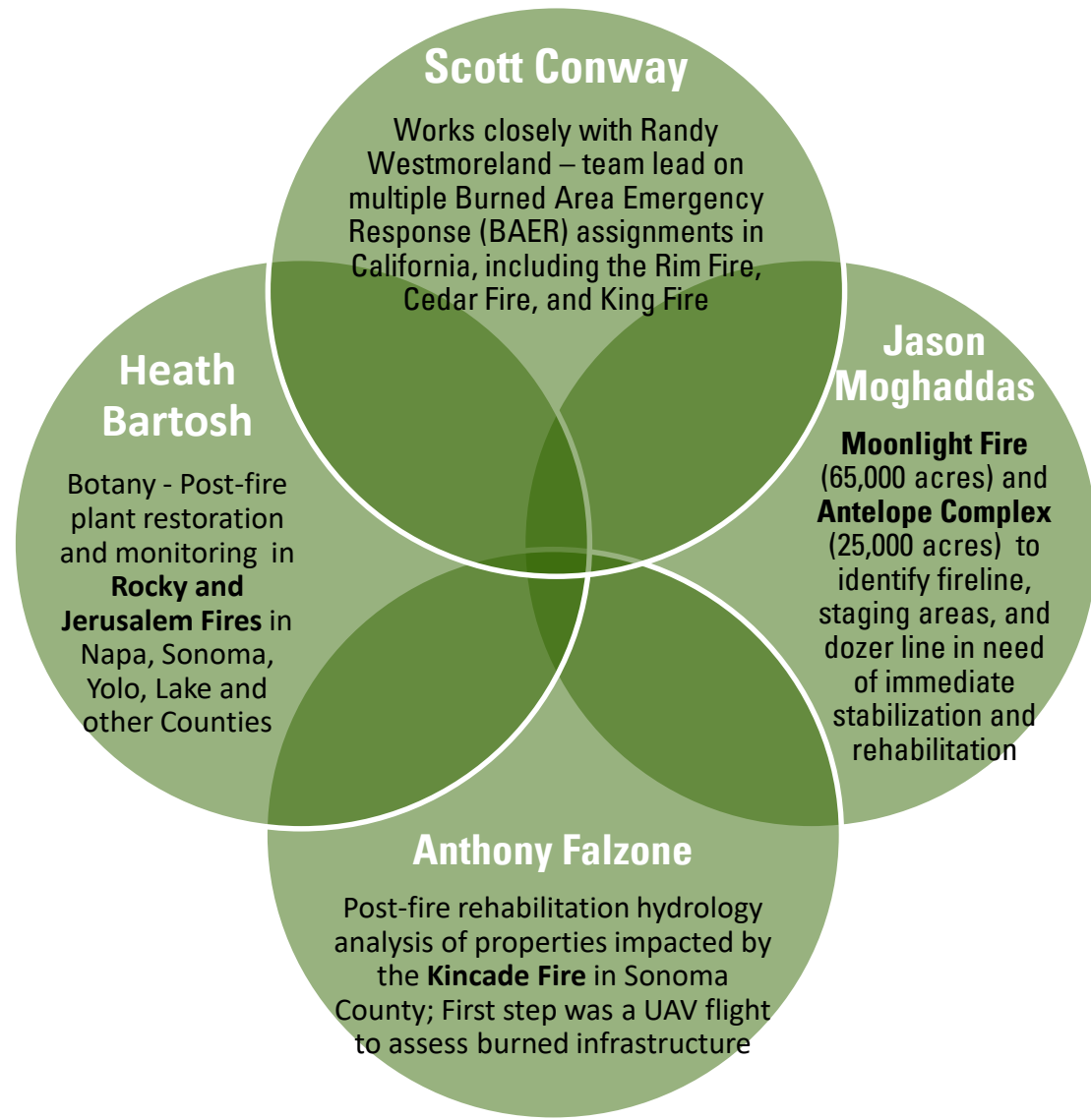
Overall Timeframe

- Develop plan in ~6 to 12 months (given coordination needed could be longer)
- CEQA review takes additional ~12 months

Question 7: Post-Fire Planning

Post-Fire Response Plan – Extensive Experience

Utilize integrated field observations, remote sensing, and UAV imagery to assess post-fire damage including fire severity, tree mortality, erosion potential, and damage to infrastructure





Other Questions?



PROMETHEUS®
Fire Consulting Services LLC


Spatial Informatics Group


PANORAMA
ENVIRONMENTAL, INC.