



PROPOSAL

APRIL 6, 2021

San Lorenzo Valley Water District

Roadway Design Services to the San Lorenzo Valley
Water District: 2021 Lyon Complex Access Road

Sandis Civil Engineers Surveyors and Planners

1700 S. Winchester Blvd., Suite 200, Campbell, CA 95008

TABLE OF CONTENTS

1	Letter of Interest
2	Key Personnel
9	Relevant Experience
12	Scope of Services
13	Expectations of Owner
13	Identification of Possible Extra Services
13	Exceptions to RFP
14	Insurance
15	Schedule
	Fee Schedule (Submitted Separately)





April 6, 2021
San Lorenzo Valley Water District
13060 Highway 9
Boulder Creek, CA 95006
831.338.2153

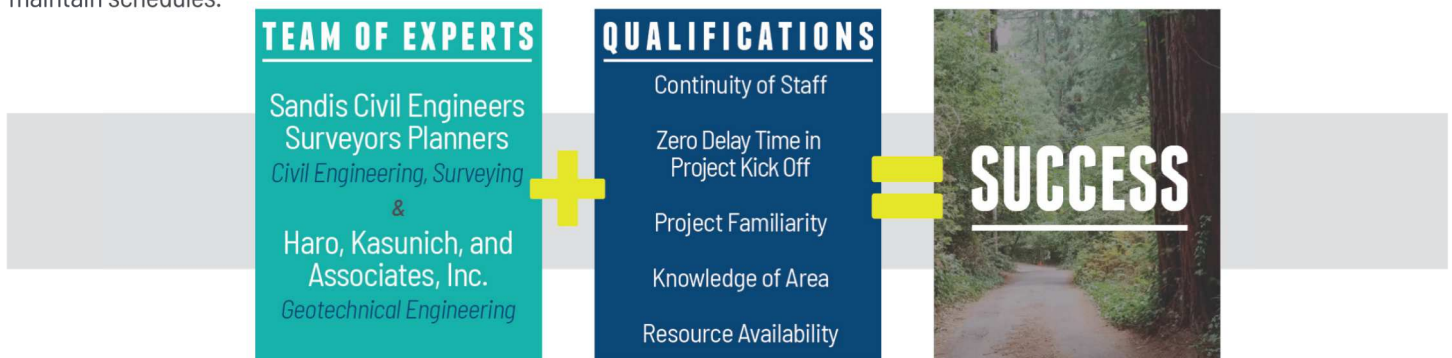
RE: San Lorenzo Valley Water District, Roadway Design Services RFP for 2021 Lyon Complex Access Road

Dear San Lorenzo Valley Water District,

Sandis is pleased to present our team's qualifications for the San Lorenzo Valley Water District's Roadway Design Services RFP for 2021 Lyon Complex Access Road. Sandis is a professional services firm specializing in civil engineering, land surveying, traffic engineering, 3D laser scanning, stormwater management, and planning. We began as a small firm in 1965 with a single goal - provide nothing short of excellent services. For 55 years, Sandis has been serving Northern California communities with this very philosophy.

Our seasoned team of engineers and surveyors, all of whom have worked with the District and are familiar with the project, offer years of relevant experience and expertise. Principal-in-Charge, **Chad Browning, PE, QSD/P, LEED AP**, will be supported by Senior Project Manager, **Nate Dickinson, PE, QSD/P**, Project Engineer, **Alex Prange, EIT**, and Senior Project Manager of Surveying, **Kelly Johnson, PLS**. In addition to our in-house engineering and surveying departments, we have supplemented our project team with Haro, Kasunich, & Associates to provide geotechnical engineering. The team presented herein are uniquely equipped with the tools, knowledge, and District experience to provide the requested services without delay.

The Sandis team's core strengths include strong project management, proactive communication, quality engineering services and surveys, integrity, and an extensive resume of successful projects with the District. Sandis offers a strong local presence, proven results in the area, continuity of staff with local familiarity and a diverse portfolio of relevant experience. Our team is proactive in evaluating project schedules and staff resource needs. As such, we are effective at prioritizing work and deliverables to meet deadlines and maintain schedules.



We know Sandis is the right team for the job given our proven track record and a staff deeply experienced in working closely with the District to provide exceptional service. Please feel free to contact me at 650.793.6642 or cbrowning@sandis.net should you have any questions, require additional information, or would like to schedule an interview.

Sincerely,

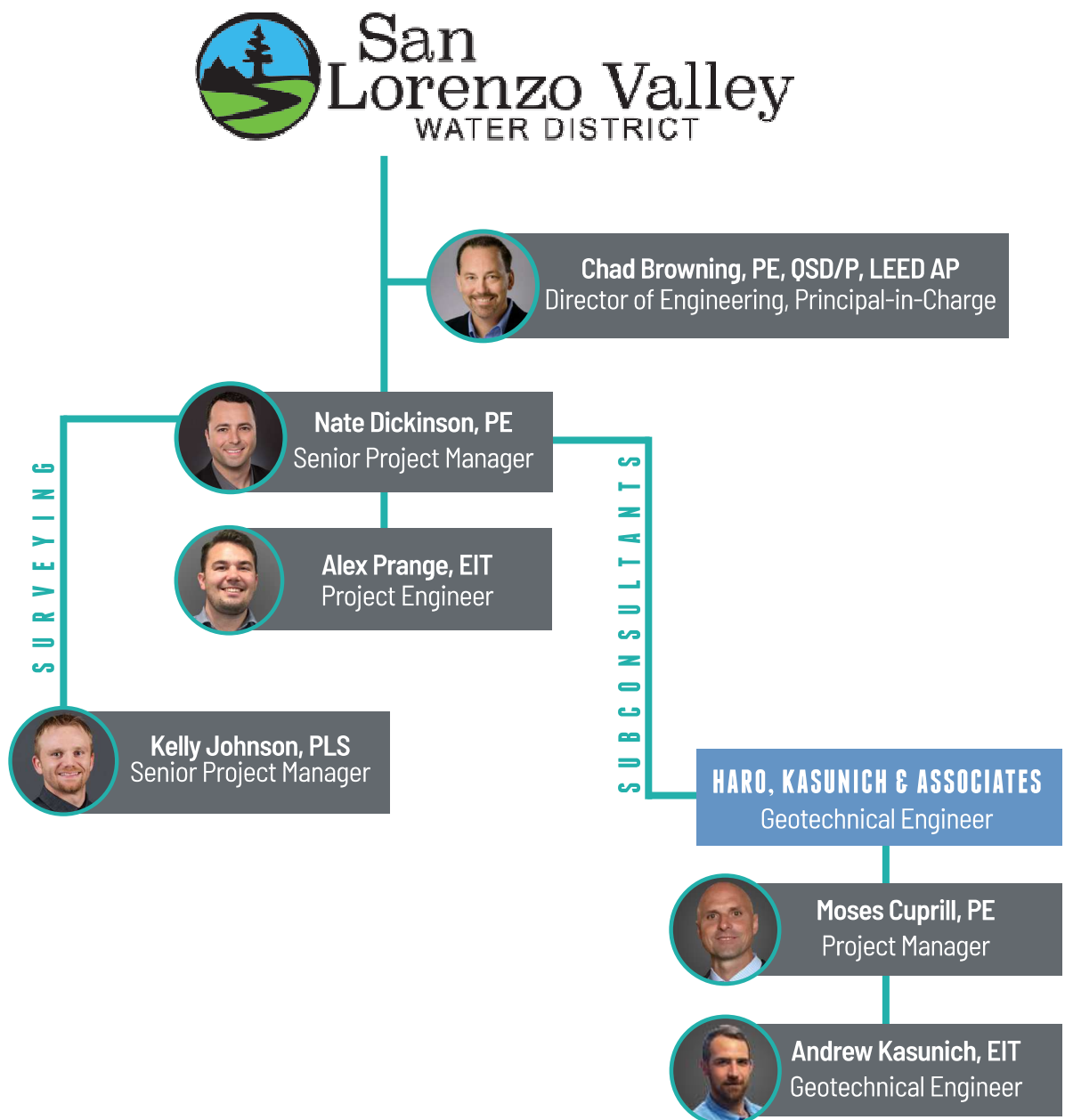
Chad Browning, PE, QSD/P, LEED AP

Director of Engineering, Principal-in-Charge
650.793.6642 | cbrowning@sandis.net
1700 S. Winchester Blvd., Suite 200, Campbell, CA 95008

ORGANIZATION CHART

The success of the Sandis Team hinges on our ability to respond quickly, communicate clearly, and provide comprehensive civil engineering and surveying services for the San Lorenzo Valley Water District (SLVWD). To make sure the District receives high-quality support, we have formed a team who is **local** and brings substantial expertise on similar contracts with cities and municipalities. Our firm organization and extensive experience allow us to achieve greater consistency in the services we deliver and efficiency in how we deliver it—providing you with better control of project success.

Each member of Sandis staff proposed for this project has been selected specifically because of their skills, experience, and abilities. Sandis recruits staff with solid skills and/or educational prerequisites and then provides training and support to ensure we assemble the most qualified and talented team every time.



CHAD BROWNING, PE, QSD/P, LEED AP**PRINCIPAL-IN-CHARGE****About**

Chad offers over 22 years of local engineering experience. As Principal-in-Charge, Chad has most recently led Sandis' engineering efforts for San Lorenzo Valley Water's fire recovery services and will use his intimate familiarity of the locale to inform and guide the work necessary for the Lyon Complex Access Road project. Chad understands the importance of early and regular communication with involved agencies to ensure that all parties are aware of the project objectives and goals. Chad's previous work with the District will afford Sandis valuable insights into the required procedures and methodologies needed throughout the project.

Relevant Experience**San Lorenzo Valley Water District** Boulder Creek, CA

In response to the CZU Lightning Complex Fire, Sandis has been providing engineering and surveying services to the San Lorenzo Valley Water District. Sandis' services to date have included: a Rapid Fire Damage system assessment of 7.5 miles of water pipeline and 7 intakes of the damaged waterlines; an expedited design and procurement of construction needed to replace or reroute the rest of the system that has become non-operational; and recovery efforts including assessment, design, permit, and procurement.

As Principal-in-Charge, Chad's responsibilities include oversight, quality assurance and quality control, meeting attendance, site visits, construction observation, and plan reviews. Chad played a vital role in overseeing the waterline design and development and continues to provide regular expertise to the team, ensuring Sandis' services are provided in a timely manner and on budget.

Additional Relevant Experience**San Lorenzo Valley Water District** Boulder Creek, CA

- Alta Via Water Pipeline
- Erosion Control Measures for raw water intakes
- Erosion Control Measures for the Water Treatment Plant
- Erosion Control Measures for Foremen Utility Corridor

San Lorenzo Valley Water District Big Steel to Lyon Interconnect Pipeline Boulder Creek, CA**Foreman Intake and Utility Corridor to Water Treatment Plant** Boulder Creek, CA**UCSC Mount Hamilton SCU Fire Disaster Assessment & Repairs** Mount Hamilton, CA**Morgan Hill Downtown Place Making Program** Morgan Hill, CA**Santa Clara County Fleets and Facilities (FAF) On-Call Civil Engineering & Surveying Contract #1** Santa Clara County, CA**Santa Clara County Fleets and Facilities (FAF) On-Call Civil Engineering & Surveying Contract #2** Santa Clara County, CA**Santa Clara County FAF Malech Road Pipeline Replacement** Santa Clara County, CA**Curie Drive Roadway Widening** San Jose, CA**22 Years of Experience**

15 Years with Sandis

Professional Civil Engineer

CA #68315

**Qualified SWPPP Developer/
Practitioner (QSD/P)**

#00917

**Bachelor of Science, Civil
Engineering**

California State University, Long
Beach

**LEED™ Accredited Professional,
USGBC**

NATE DICKINSON, PE, QSD/P**PROJECT MANAGER****About**

Nate Dickinson has over 15 years of experience and has been involved with the design of many civic and public works projects. His specific areas of engineering expertise include: grading and drainage; detention and retention basins; central plant additions and expansions; slope stabilization; storm and sanitary sewer systems; security fire alarm systems; telecommunication distribution; pump station pressure and filtration; hot & chilled water systems; water storage tanks; fire, domestic and reclaimed water systems; steam, natural gas and emergency power/dual power systems; and street, parking lot, and bike path improvements. Nate works closely with regulatory agencies to ensure Sandis' design drawings meet state, local, and federal regulations so construction permits are obtained on schedule.

Relevant Experience**San Lorenzo Valley Water District** Boulder Creek, CA

Following the 2020 CZU Lightning Fire Complex, Sandis has been providing engineering and surveying to SLVWD. Sandis assisted SLVWD in temporary restoration and repair of the damaged water system. As Senior Project Manager of Engineering, Nate is responsible for plan reviews, and coordination with SLVWD and Sandis' in-house engineering and surveying departments. Nate has worked closely with Principal-in-Charge, Chad Browning, and the engineering team to ensure that Sandis' work is completed quickly and on budget.

Additional Relevant Experience**San Lorenzo Valley Water District** Boulder Creek, CA

- Alta Via Water Pipeline
- Erosion Control Measures for raw water intakes
- Erosion Control Measures for the Water Treatment Plant
- Erosion Control Measures for Foremen Utility Corridor

San Lorenzo Valley Water District Big Steel to Lyon Interconnect Pipeline Boulder Creek, CA**Foreman Intake and Utility Corridor to Water Treatment Plant** Boulder Creek, CA**UCSC Mount Hamilton SCU Fire Disaster Assessment & Repairs** Mount Hamilton, CA**Street Improvement - Perimeter at Stevens Creek** Cupertino, CA**Roadway Design for Panama Mall Via Ortega** Stanford, CA**15 Years of Experience**

9 Years at Sandis

BS, Civil Engineering

Cal Poly San Luis Obispo

Professional Engineer

Civil Engineer CA #79716

Qualified SWPPP Developer/

Practitioner

QSD/P #24248

ALEX PRANGE, EIT

PROJECT ENGINEER

About

Alex Prange, EIT has over 5 years of engineering experience and 3 years of experience with the Sandis team. Alex has played a crucial role in Sandis' work for the San Lorenzo Valley Water District within the past year and will use his familiarity with the locale and the District to guide his work on the requested services.

Relevant Experience

San Lorenzo Valley Water District Boulder Creek, CA

As Design Engineer, Alex Prange's responsibilities include preparation of damage assessment report, CAD drafts, research, coordination, pipeline design, design of erosion control measures at water treatment plant, construction observation and plan review for Foreman Utility Corridor to Intake Design, design and drafting of Foreman Intake utilities, design and drafting of Alta Via temporary utilities, design and drafting of Alta Via permanent Utilities, preparation of SLVWD site-wide damage assessment report and exhibits, construction observation and administration at the Foreman Intake project, and preparation of Little Lyon Tank recoating memo and specifications.

Additional Relevant Experience

San Lorenzo Valley Water District Boulder Creek, CA

- Alta Via Water Pipeline
- Erosion Control Measures for raw water intakes
- Erosion Control Measures for the Water Treatment Plant
- Erosion Control Measures for Foremen Utility Corridor

San Lorenzo Valley Water District Big Steel to Lyon Interconnect Pipeline Boulder Creek, CA

Foreman Intake and Utility Corridor to Water Treatment Plant Boulder Creek, CA

Mount Madonna Water Tank Watsonville, CA

Storm Drain Extension for Santa Ynez and Delores St. Stanford, CA

Vasona Park Modular Project Los Gatos, CA

Palo Alto Public Safety Building & Parking Palo Alto, CA

ADA Boat Access at Vasona Lake County Park Los Gatos, CA

Silver Creek Essential Facilities San Jose, CA

Santa Clara County Fire Department Headquarters Campbell, CA



5 Years of Experience

3 Years with Sandis

BS, Civil Engineering

Cal Poly San Luis Obispo

Engineer in Training

KELLY JOHNSON, PLS**SENIOR PROJECT MANAGER****About**

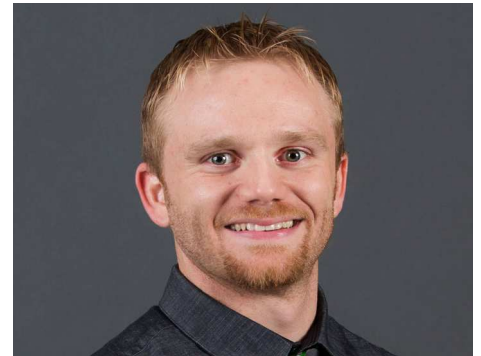
Kelly Johnson has over 18 years of experience in land surveying and has worked closely with our in-house surveying team on the preparation of topographic and boundary surveys. His background includes an extensive knowledge and expertise in post data collection processes; preparation of calculations; preservation of project field control; maintaining documentation i.e. reports, project plans, specifications, and as-builts; and managing project budget and change orders.

Relevant Experience**San Lorenzo Valley Water District** Boulder Creek, CA

As Senior Project Manager of Surveying, Kelly was responsible for survey coordination and date review, topographic survey review, boundary survey – control survey, and Right of Way review. Sandis has been working closely with SLVWD to provide emergency repair to the District's water system damage caused by 2020 fires. Kelly has played a vital role in the timely and efficient delivery of surveying services throughout Sandis' contract. Kelly's experience surveying the SLVWD local has afforded him great insight into the area and the necessary components to successfully completing surveying work for the District.

Additional Relevant Experience**San Lorenzo Valley Water District** Boulder Creek, CA

- Alta Via Water Pipeline
- Erosion Control Measures for raw water intakes
- Erosion Control Measures for the Water Treatment Plant
- Erosion Control Measures for Foremen Utility Corridor

San Lorenzo Valley Water District Big Steel to Lyon Interconnect Pipeline Boulder Creek, CA**Foreman Intake and Utility Corridor to Water Treatment Plant** Boulder Creek, CA**UCSC Mount Hamilton SCU Fire Disaster Assessment & Repairs** Mount Hamilton, CA**Street Improvement – Perimeter at Stevens Creek** Cupertino, CA**Roadway Design for Panama Mall Via Ortega** Stanford, CA**Churchill Avenue Corridor** Palo Alto, CA**Derby Street** San Francisco, CA**Persian Drive Sidewalk Addition** Sunnyvale, CA**Jefferson Avenue & Cleveland Street Intersection** Redwood City, CA**Paradise Drive Roadway Improvements** Fairfield, CA**18 Years of Experience**

8 Years with Sandis

Professional Land Surveyor,
California #9126

Professional Land Surveyor,
Washington #48759

Certificate, Land Surveying
Renton College

MOSES CUPRILL, PE

PRINCIPAL GEOTECHNICAL ENGINEER/ PROJECT MANAGER

About

Mr. Cuprill is currently Principal/Owner at Haro, Kasunich and Associates. His responsibilities include work plan development for various geotechnical engineering investigations pertaining to landslide stability, coastal bluff recession, retaining walls, roadway infrastructure and public works projects, coastal protection structures (new and maintenance of existing), ocean wave runup, and liquefaction. Mr. Cuprill prepares cost estimate proposals, directs field studies and laboratory testing program, analysis of data, develop design criteria, and preparation of report summarizing findings. Mr. Cuprill also manages each of his project budgets and monitors efficiency.

Relevant Experience

Highland Way PM 3.25 Santa Cruz County, CA

Provided design recommendation and construction oversight for a 20 ft. high tieback soldier pile retaining wall to restore access through Highland Way.

County of Santa Department of Public Works

701 Ocean Street, Room 410 Santa Cruz, CA 95060

831-454-2385

Bean Creek Road Slip-Out PM 2.10 Santa Cruz County, CA

Provided design criteria, recommendations, and construction oversight for engineered fill slopes, pier and lagging retaining walls, and site drainage.

County of Santa Department of Public Works

701 Ocean Street, Room 410 Santa Cruz, CA 95060

831-454-2385

Lyon Tank Access Road Landslide Repair Boulder Creek, CA

Landslide study of a broad soil mass that disconnected from the hillside undermining Madrone Road during the winter rain season of 2016/2017. Provided geotechnical design criteria to restore the roadway and stabilize the soil mass.

San Lorenzo Valley Water District

13060 Highway 9, Boulder Creek, California



20 Years of Experience

15 Years with Haro, Kasunich & Associates, Inc.

Professional Engineer

California #78901

BS, Civil Engineering

Cal Poly State University, San Luis Obispo

ANDREW KASUNICH, EIT

GEOTECHNICAL ENGINEER

About

Andrew has been working in the geotechnical consulting field at HKA for 4.5 years. His experience includes geotechnical site characterization, foundation design, retaining wall design, landslide slope stability, coastal bluff analysis, soil nail and tieback anchor design, and various civil/coastal engineering projects. Andrew is also responsible for management of both the design and construction observation phase of projects. He most recently managed the construction and oversight of the 100 Esplanade Seawall Rehabilitation Project in Pacifica, California. He prides himself on his ability to listen to his client's needs and develop engineered solutions that meet those needs.

Relevant Experience

323, 900 & 1220 Hopkins Gulch Road Slip Outs Boulder Creek, CA

Provided repair alternatives, design criteria, and construction observation for various road slip-outs along Hopkins Gulch Road. Recommended repairs, included cantilever soldier pile, pin pile, and tieback walls.

CSA 51/Hopkins Gulch Road Users Association
831-566-7909

Dark Gulch Crossing Stabilization Project Old Haul Road San Mateo County, CA

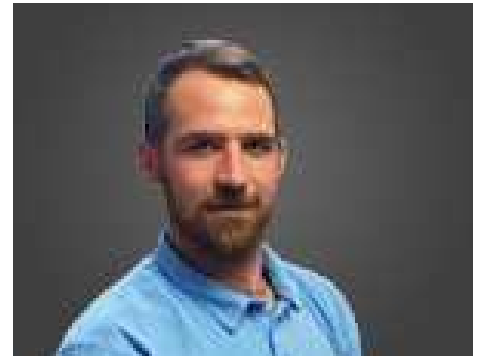
Provided design criteria, recommendations, and construction oversight for repair of an 80-foot-deep stream crossing failure on Old Haul Road. The project included removal of unstable fill material and crib logs, installation of a 66-inch x 240 ft new culvert and reconstruction of the fill embankment to restore road access.

Sara Polgar, Conservation Program Specialist
San Mateo Resource Conservation District
650-669-9077

Alpine Road Trail Improvement Project Alpine Road San Mateo County, CA

Provided geotechnical design criteria for proposed road and trail improvements along approximately 7,400 LF of existing road within the Coal Creek Open Space Preserve.

Bryan Apple
Midpeninsula Regional Open Space District
650-691-1200



4.5 Years with Haro, Kasunich & Associates, Inc.

Professional License
EIT 159907

BS, Civil Engineering & Environmental Engineering
University of California, Davis

Boulder Creek, CA
2020 - Ongoing

SAN LORENZO VALLEY WATER DISTRICT



Since August 2020, Sandis has been providing civil engineering and surveying to the San Lorenzo Valley Water District (SLVWD) in an emergency response to the wildfires in the Santa Cruz Mountains. The CZU Lightning Complex Fire burned 86,000 acres, leaving roads closed and 1,185 structures burned in Santa Cruz and San Mateo Counties. All residents in the SLVWD were evacuated, and although many safely returned, they confronted power outages and an uncertain tap water status.

As a result of the CZU Lightning Complex Fire, SLVWD facilities sustained significant facility and operational capacity losses. The water system's primary damage includes intakes and raw water pipelines from the Peavine; Silver; Foreman; Clear Creek 1, 2 and 3; and Sweetwater water intake locations. The Bennett Spring Overflow, Settling Tanks, related piping, and controls were also completely

destroyed. The Lyon, Little Lyon, and Big Steel Water Tanks, as well as the Water Treatment Plant with its associated structures, were spared from significant damage but will require some minor repair before resuming full operation.

To assist SLVWD in temporary restoration and repair of the system, and to begin long-term planning solutions, Sandis performed a Rapid Fire Damage system assessment of 7.5 miles of water pipeline and 7 intakes of the damaged waterlines. More than 50% of the structures assessed were completely destroyed or majorly damaged, while other facilities have heat damage, smoke, or possible contamination. SLVWD is currently working on emergency repairs to bring the water system back to functioning condition. The next step in restoring the water supply will be the reconnection of the Little Lyon and Big Steel Tanks that were destroyed in the fire.

Sandis is providing expedited design and procurement of construction needed to replace or reroute the rest of the system that has become non-operational.

Sandis' management of recovery efforts includes assessment, design, permit, and procurement. While the Fire Damage Assessment Report has been completed, Sandis continues to provide on-call services to assist SLVWD in the repair and recovery of the water system. The team provides weekly reporting to the District Manager. Sandis provides development and management task/project schedule and cost model for all recovery efforts. Throughout this project, the Sandis team has implemented expedited "best practice" study for longer term system reconstruction. In addition to the recovery of the water system, Sandis is providing expedited study and design for watershed protection during winter weather.

SAN LORENZO VALLEY WATER DISTRICT BIG STEEL TO LYON INTERCONNECT PIPELINE

Boulder Creek, CA
2020 - 2021



For the San Lorenzo Valley Water District, Sandis provided engineering services for the repair and replacement of 1,200 linear feet of surface mounted pipeline which was destroyed during the CZU fire of 2020. Sandis provided turn-key services to assess damage, plan, design, and manage the reconstruction. High angle topography, fire damaged trees, limited equipment access and critical District demand outlines the challenges of the project. Sandis provided rapid deployment of surveyors and engineers to develop a plan, work with a contractor to refine, and procure materials, as well as management of construction activities. Additional scope included large tree removal, agency permitting, electric and telecom system replacement and erosion controls to protect the work zone during the fast approaching winter season.

SAN LORENZO VALLEY WATER DISTRICT FOREMAN INTAKE TO WTP PIPELINE

Boulder Creek, CA
2020 - 2021



Sandis provided engineering services for the San Lorenzo Valley Water District for 3,500 linear feet of pipeline to replace a surface mounted pipeline that was destroyed during the CZU fire of 2020. Sandis performed rapid evaluation and assessment of damage, planning and design of replacement, inclusion of pipeline hardening/protections and alignment revision to provide pipeline accessibility. The new 12-inch and 8-inch lines were designed and installed in rapid fashion to meet the District demands (Pipeline feed raw water to WTP) immediately and long term. Sandis services include survey, engineering and construction management within days of the fire to assist the District with complete turn-key services to replace the pipeline. Additional scope included large tree removal and erosion controls to protect the work zone during the fast approaching winter season.

Mount Hamilton, CA
2020 - Ongoing

UCSC MOUNT HAMILTON SCU FIRE DISASTER ASSESSMENT & REPAIRS



Sandis expedited engineering services in response to damage caused by the SCU Lightning Complex wildfires on Mount Hamilton, located in the Diablo Range in Santa Clara County, California. The peak, at 4,265 feet, overlooks Santa Clara Valley and is the site of Lick Observatory, the world's first permanently occupied mountaintop observatory. Owned by the University of California and operated by the University of California Observatories (UCO), it is home to the multiple families and residents who maintain the facilities. These residents live in homes spread out at various locations and rely on pumps and transformers to supply basic utilities (such as water and electricity).

Our services were divided in three main categories: damage assessment; planning and budgeting; and design for repairs/replace. Damage assessment included site visits, documentation of damage, and cost estimating for repairs or replacement.

Planning and budgeting efforts were focused on breaking damage into categories and developing project budgets for future public bid. Design efforts including preliminary and final plans, specifications cost estimates necessary for UCSC review and approval.

All of our work focused on infrastructure elements such as roads, drainage systems, water sources, water storage and water distribution system, site electric and telecommunications, buildings, retaining structures as well as vegetation and ground cover. The first of many future projects is out to bid currently for the slope stabilization and roadway safety elements damaged during the fire.

Our team worked closely with UCSC project managers as well as facilities personnel at Mt Hamilton to prioritize work efforts to maximize fire restoration efforts.

SCOPE OF SERVICES

TASK 1: PREPARE A GEOTECHNICAL REPORT FOR THE NEW ACCESS ROAD AREA.

TASK 2: PROVIDE FIELD WORK AND OFFICE CALCULATIONS TO PRODUCE A SUPPLEMENTAL TOPOGRAPHIC SURVEY at an appropriate scale to fit on a 24x36 or 30x42 sheet layout.

This survey will show the location of existing trees 6 inches and larger, structures, walkways, hardscape, fences, adjacent roadways, and visible above ground utilities within the project area. Field measurement of inverts of accessible and unobstructed visible catch basins, area drains, storm drain manholes and sanitary sewer manholes will be shown.

TASK 3: PREPARE A FEASIBILITY STUDY TO MAKE ROADWAY LOCATION RECOMMENDATIONS TO THE WATER DISTRICT.

Prepare civil related feasibility documents:

- Civil cover sheet and notes.
- Topographic survey.
- Grading and drainage plan.
- Fire and delivery truck access plan.
- Preliminary cost estimate.

TASK 4: PREPARE CONSTRUCTION DOCUMENTS

Prepare civil related construction documents, limited to:

- Civil cover sheet and notes.
- Topographic survey.
- Demolition and tree disposition.
- Grading and drainage plan.
- Utility plan.
- Stormwater management plan and supporting calculations.
- Construction details.
- Striping and signing plan.
- Erosion control plan and details.
- Fire access plan.
- Construction document specifications.
- Cost estimate.

TASK 5: BIDDING PHASE

- Respond to bidder's questions and issue design clarifications as necessary.
- Reissue plans once with RFIs and clarification changes documented.
- Assist the District with review of bids.

TASK 6: CONSTRUCTION ADMINISTRATION

- Attend a pre-construction meeting.
- Provide up to four (4) site visits to observe the construction of the civil related site work.
- Assist the Water District in civil related requests for information and contractor submittals during construction.
- Conduct a final site visit and prepare a civil punch list, it is assumed that the contractor will address all punch list items and that a follow-up site visit is not necessary.

TASK 7: RECORD DRAWINGS

- Document all RFIs and changes to design based on visual inspection and contractor markups.
- Prepare record documents for civil sheets.
- Issue civil engineering record documents (plans and specifications) in electronic format.

EXCEPTIONATION OF OWNER

Due to Sandis' ongoing relationship and familiarity with the San Lorenzo Valley Water District and locale, Sandis does not anticipate heavy involvement from the District during the information gathering phase of the project. Sandis will continue our collaborative process with the District throughout the project. Our recent work in the area, including engineering and surveying services for Big Steel and Lyon Tank Complex, uniquely positions our team to begin the Lyon Complex Access Road work with existing knowledge and surveys of the area.

POSSIBLE EXTRA SERVICES

Sandis foresees possible extra services to include:

ENHANCED CONSTRUCTION ADMINISTRATION

The Sandis Team will be a reliable source to the Water District through our commitment of assigned team members coupled with our depth of staff resources.

QUALIFIED SWPPP PRACTITIONER

Due to the proximity to the creek and the overall size of the project. The Sandis team can provide qualified SWPPP Practitioner (QSP) services for the project.

EXCEPTIONS TO RFP

Sandis has carefully read through the District's RFP and does not wish to make any exceptions or modifications to the RFP.



CERTIFICATE OF LIABILITY INSURANCE

DATE (MM/DD/YYYY)

3/26/2021

THIS CERTIFICATE IS ISSUED AS A MATTER OF INFORMATION ONLY AND CONFERS NO RIGHTS UPON THE CERTIFICATE HOLDER. THIS CERTIFICATE DOES NOT AFFIRMATIVELY OR NEGATIVELY AMEND, EXTEND OR ALTER THE COVERAGE AFFORDED BY THE POLICIES BELOW. THIS CERTIFICATE OF INSURANCE DOES NOT CONSTITUTE A CONTRACT BETWEEN THE ISSUING INSURER(S), AUTHORIZED REPRESENTATIVE OR PRODUCER, AND THE CERTIFICATE HOLDER.

IMPORTANT: If the certificate holder is an **ADDITIONAL INSURED**, the policy(ies) must have **ADDITIONAL INSURED** provisions or be endorsed. If **SUBROGATION IS WAIVED**, subject to the terms and conditions of the policy, certain policies may require an endorsement. A statement on this certificate does not confer rights to the certificate holder in lieu of such endorsement(s).

PRODUCER Dealey, Renton & Associates P. O. Box 12675 Oakland, CA 94604-2675 License #0020739		CONTACT NAME: PHONE (A/C, No, Ext): 510-465-3090 FAX (A/C, No): 510-452-2193 E-MAIL ADDRESS: Certificates@Dealeyrenton.com	
		INSURER(S) AFFORDING COVERAGE	
		INSURER A: Continental Insurance Company	
		INSURER B: American Casualty Company of Reading PA	
		INSURER C: Travelers Casualty and Surety Co of America	
		INSURER D: Transportation Insurance Company	
		INSURER E:	
		INSURER F:	

COVERAGES **CERTIFICATE NUMBER:** 1303851348 **REVISION NUMBER:**

THIS IS TO CERTIFY THAT THE POLICIES OF INSURANCE LISTED BELOW HAVE BEEN ISSUED TO THE INSURED NAMED ABOVE FOR THE POLICY PERIOD INDICATED. NOTWITHSTANDING ANY REQUIREMENT, TERM OR CONDITION OF ANY CONTRACT OR OTHER DOCUMENT WITH RESPECT TO WHICH THIS CERTIFICATE MAY BE ISSUED OR MAY PERTAIN, THE INSURANCE AFFORDED BY THE POLICIES DESCRIBED HEREIN IS SUBJECT TO ALL THE TERMS, EXCLUSIONS AND CONDITIONS OF SUCH POLICIES. LIMITS SHOWN MAY HAVE BEEN REDUCED BY PAID CLAIMS.

INSR LTR	TYPE OF INSURANCE	ADDL INSD	SUBR WVD	POLICY NUMBER	POLICY EFF (MM/DD/YYYY)	POLICY EXP (MM/DD/YYYY)	LIMITS
A	<input checked="" type="checkbox"/> COMMERCIAL GENERAL LIABILITY <input type="checkbox"/> CLAIMS-MADE <input checked="" type="checkbox"/> OCCUR <input checked="" type="checkbox"/> Contractual Liab <input checked="" type="checkbox"/> XCU Included GEN'L AGGREGATE LIMIT APPLIES PER: <input type="checkbox"/> POLICY <input checked="" type="checkbox"/> PROJECT <input type="checkbox"/> LOC OTHER:	Y	Y	6075819456	3/3/2021	3/3/2022	EACH OCCURRENCE \$ 1,000,000 DAMAGE TO RENTED PREMISES (Ea occurrence) \$ 1,000,000 MED EXP (Any one person) \$ 15,000 PERSONAL & ADV INJURY \$ 1,000,000 GENERAL AGGREGATE \$ 2,000,000 PRODUCTS - COMP/OP AGG \$ 2,000,000 \$
D	<input checked="" type="checkbox"/> AUTOMOBILE LIABILITY <input checked="" type="checkbox"/> ANY AUTO <input type="checkbox"/> OWNED AUTOS ONLY <input type="checkbox"/> SCHEDULED AUTOS <input checked="" type="checkbox"/> HIRED AUTOS ONLY <input checked="" type="checkbox"/> NON-OWNED AUTOS ONLY	Y	Y	6075819473	3/3/2021	3/3/2022	COMBINED SINGLE LIMIT (Ea accident) \$ 1,000,000 BODILY INJURY (Per person) \$ BODILY INJURY (Per accident) \$ PROPERTY DAMAGE (Per accident) \$ \$
A	<input checked="" type="checkbox"/> UMBRELLA LIAB <input checked="" type="checkbox"/> OCCUR <input type="checkbox"/> EXCESS LIAB <input type="checkbox"/> CLAIMS-MADE <input type="checkbox"/> DED <input type="checkbox"/> RETENTION \$			6075819439	3/3/2021	3/3/2022	EACH OCCURRENCE \$ 5,000,000 AGGREGATE \$ 5,000,000 \$
D B	WORKERS COMPENSATION AND EMPLOYERS' LIABILITY ANY PROPRIETOR/PARTNER/EXECUTIVE OFFICER/MEMBER EXCLUDED? (Mandatory in NH) If yes, describe under DESCRIPTION OF OPERATIONS below	Y	N/A	6075819425 6075819411	3/3/2021 3/3/2022	3/3/2022 3/3/2022	<input checked="" type="checkbox"/> PER STATUTE <input type="checkbox"/> OTH-ER E.L. EACH ACCIDENT \$ 1,000,000 E.L. DISEASE - EA EMPLOYEE \$ 1,000,000 E.L. DISEASE - POLICY LIMIT \$ 1,000,000
C	Professional Liability			107211098	3/3/2021	3/3/2022	Per Claim \$5,000,000 Annual Aggregate \$5,000,000

DESCRIPTION OF OPERATIONS / LOCATIONS / VEHICLES (ACORD 101, Additional Remarks Schedule, may be attached if more space is required)
 Umbrella Liability policy is a follow-form to underlying General Liability/Auto Liability/Employers Liability.
 FOR PROPOSALS. An Actual Certificate will be issued upon the request of the Named Insured.

CERTIFICATE HOLDER

CANCELLATION 30 Day Notice of Cancellation

For Proposal Purposes	SHOULD ANY OF THE ABOVE DESCRIBED POLICIES BE CANCELLED BEFORE THE EXPIRATION DATE THEREOF, NOTICE WILL BE DELIVERED IN ACCORDANCE WITH THE POLICY PROVISIONS.
	AUTHORIZED REPRESENTATIVE

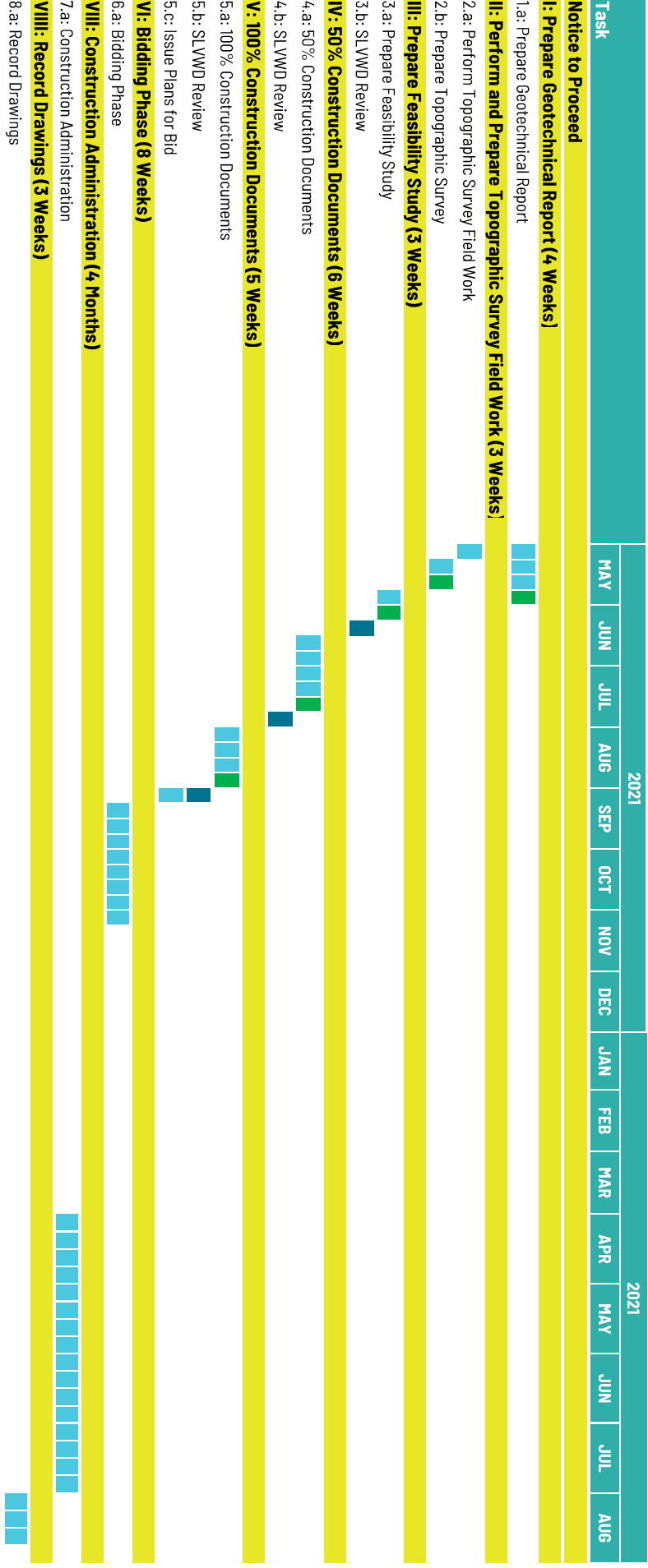
© 1988-2015 ACORD CORPORATION. All rights reserved.

ACORD 25 (2016/03)

The ACORD name and logo are registered marks of ACORD

PROJECT SCHEDULE

San Lorenzo Valley Water District
Roadway Design Services for 2021 Lyon Complex Access Road



LEGEND

Task in progress

X

Project Meeting(s)

Milestone / Deliverable

District Review Period