





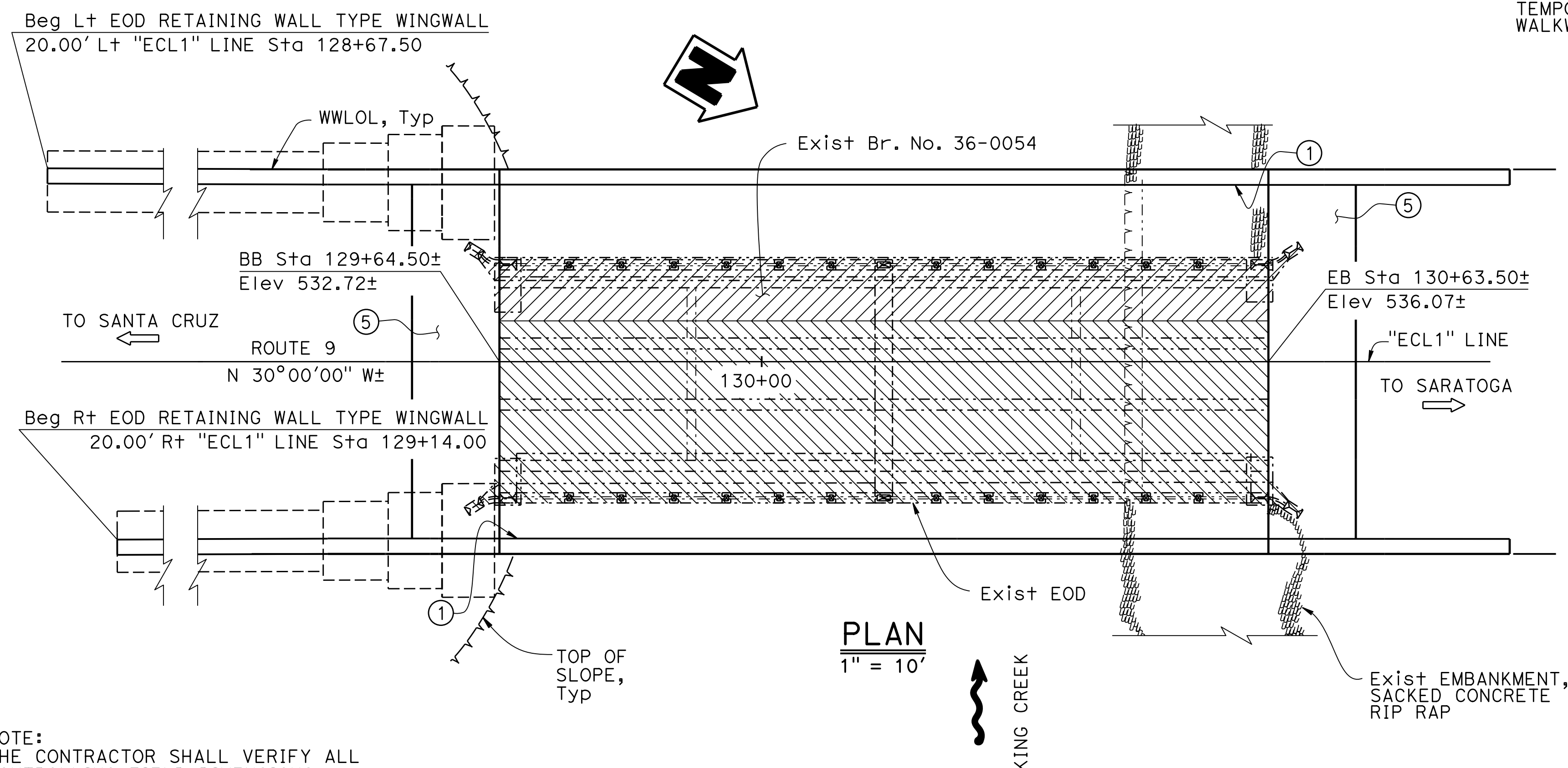
- ① Paint "KING CREEK BRIDGE "
"Br. No. TBD", year constructed
- ② Concrete Barrier Type 85 (Mod)
- ③ Temporary Railing (Type K), see Roadway Plans
- ④ Polyester Concrete Overlay (1")
- ⑤ Structure Approach Type EQ (10)

For "QUANTITIES", "GENERAL NOTES", "INDEX TO PLANS",
"STANDARD PLANS" and "PILE DATA TABLE",
see "INDEX TO PLANS" sheet

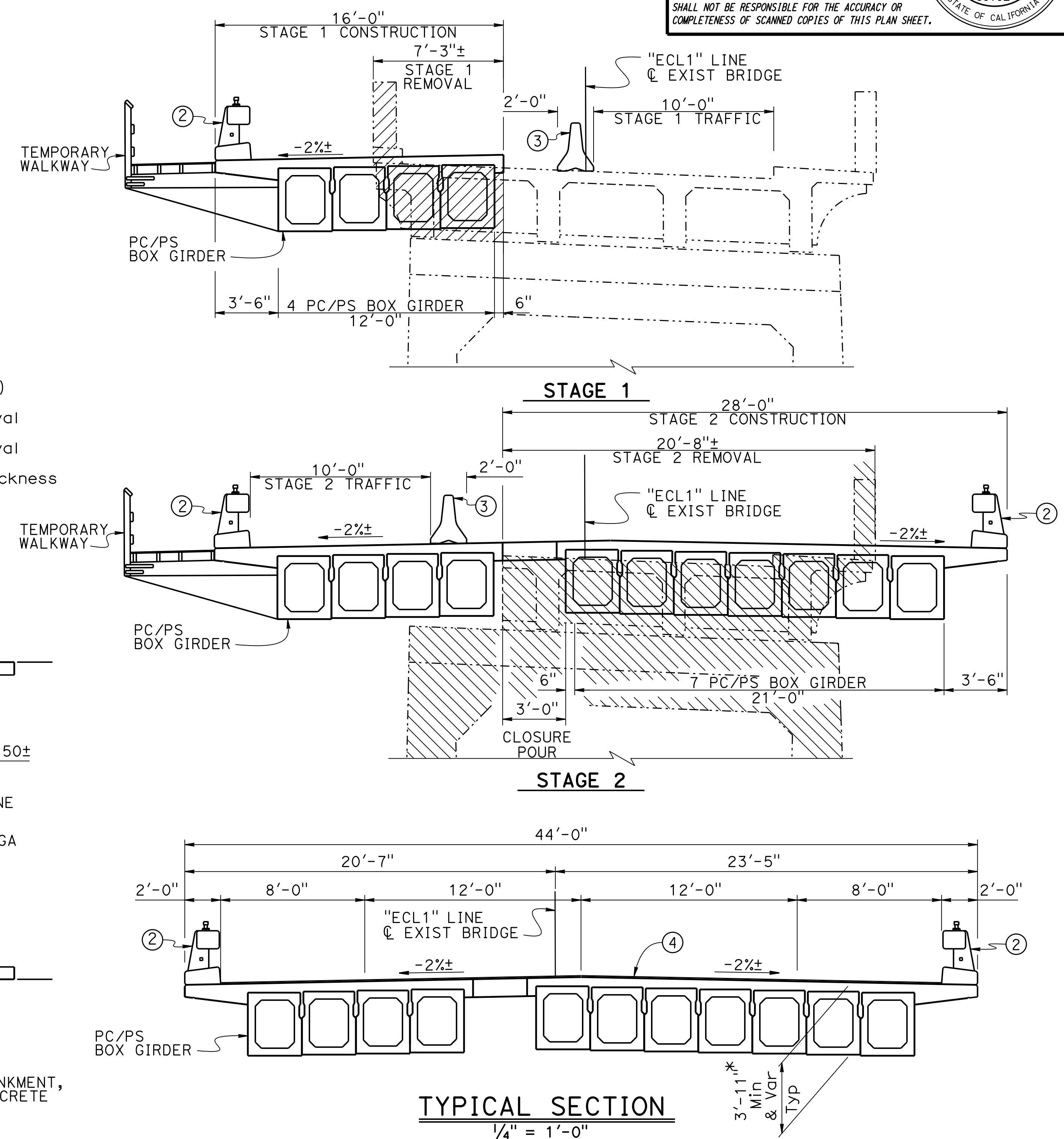
ELEVATION
1" = 10'

LEGEND:

- - - - Existing structure (Br#36-0054)
 Limits of stage 1 Bridge removal
 Limits of stage 2 Bridge removal
 * Polyester concrete overlay thickness not included



NOTE:
THE CONTRACTOR SHALL VERIFY ALL
CONTROLLING FIELD DIMENSIONS
BEFORE ORDERING OR FABRICATING
ANY MATERIAL.



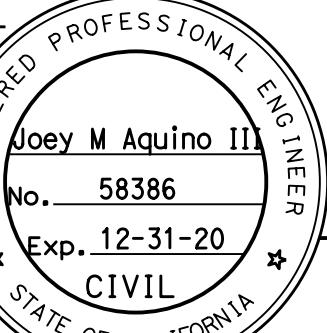
INCOMPLETE PLAN
FOR DESIGN STUDY
PRINTED
DATE: 11-MAR-2021
Office of
Structure Design
STATE OF CALIFORNIA

DIST	COUNTY	ROUTE	POST MILES TOTAL PROJECT	SHEET NO.	TOTAL SHEETS
05	SCR	9	PPPP	????	####

REGISTERED CIVIL ENGINEER _____ DATE _____ X

MM/DD/YYYY

PLANS APPROVAL DATE _____



THE STATE OF CALIFORNIA OR ITS OFFICERS OR AGENTS SHALL NOT BE RESPONSIBLE FOR THE ACCURACY OR COMPLETENESS OF SCANNED COPIES OF THIS PLAN SHEET.

X BRANCH CHIEF	DESIGN	BY Quang Nguyen	CHECKED X	LOAD & RESISTANCE FACTOR DESIGN	LIVE LOADING HL93 W/"LOW-BOY"; PERMIT DESIGN VEHICLE	STATE OF CALIFORNIA DEPARTMENT OF TRANSPORTATION	DIVISION OF ENGINEERING SERVICES STRUCTURE DESIGN DESIGN BRANCH 3	BRIDGE No.	KINGS CREEK BRIDGE (REPLACE)									
	DETAILS	BY Shadi Motalebi	CHECKED X	LAYOUT	BY X			CHECKED X	36-0125									
	QUANTITIES	BY X	CHECKED X	SPECIFICATIONS	BY X			PLANS AND SPECS COMPARED	POST MILE									
								15.49	GENERAL PLAN									
STRUCTURES DESIGN GENERAL PLAN SHEET (ENGLISH) (REVISION 12/13/2019)				DATE PLOTTED => 11-MAR-2021 FILE => 36-0054-F-a-gp01.dgn		TIME PLOTTED => 18:44 USERNAME => s136540		ORIGINAL SCALE IN INCHES FOR REDUCED PLANS		0 1 2 3		UNIT: 3578	DISREGARD PRINTS BEARING EARLIER REVISION DATES		REVISION DATES		SHEET	OF
												PROJECT NUMBER & PHASE: 05160000781	CONTRACT No.: 05-1H4704		9-24-20 3-11-21		1	X