

Figure 6-1
Loch Lomond Reservoir Stage-Volume Relation
 (Source: City of Santa Cruz Water Department; USGS, 2000)

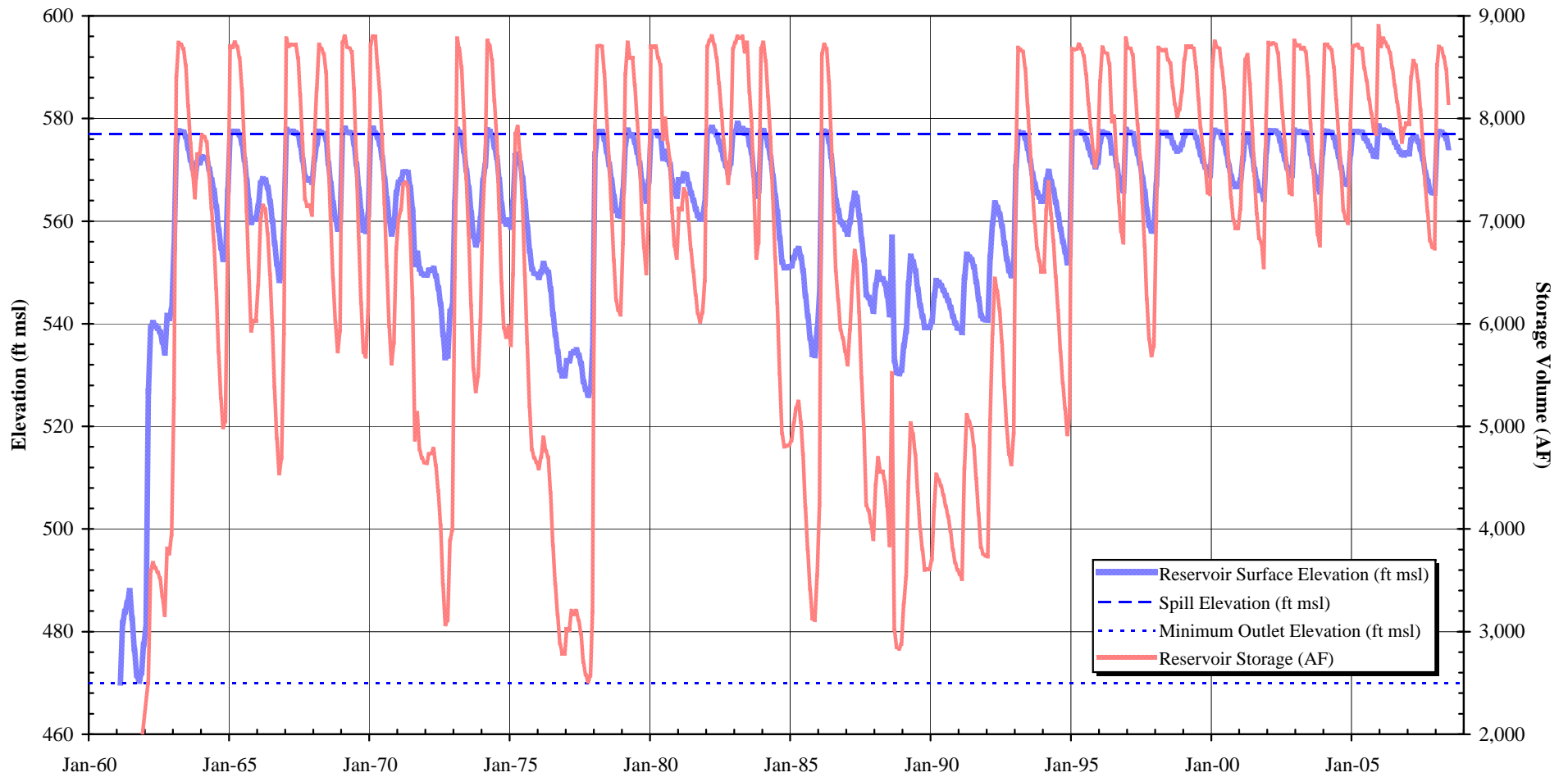
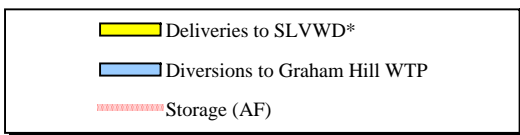
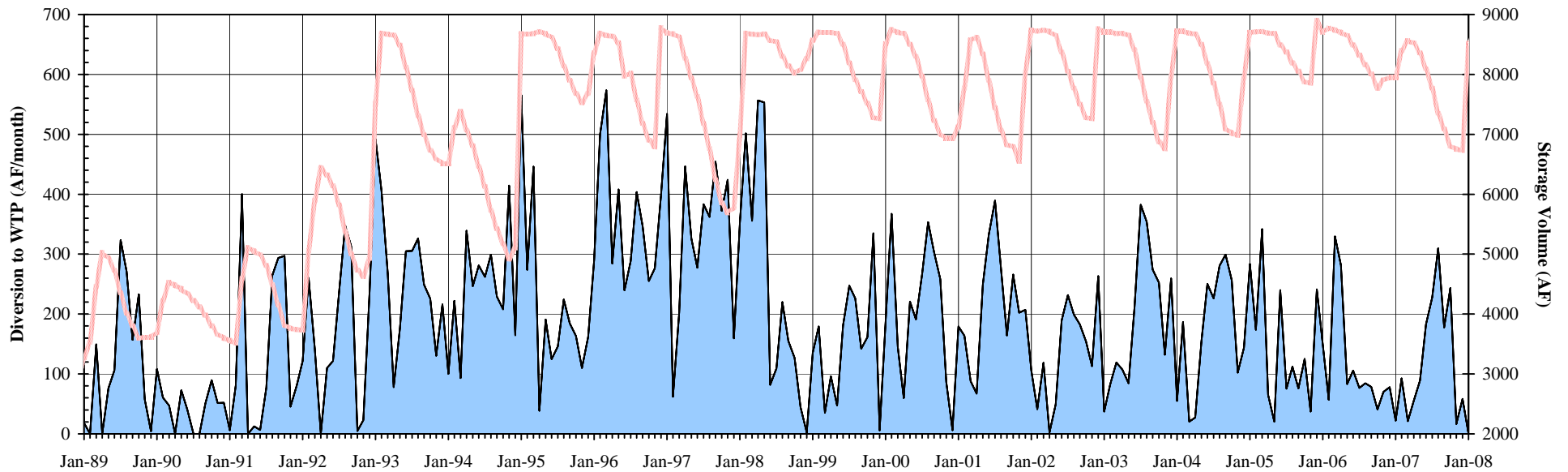
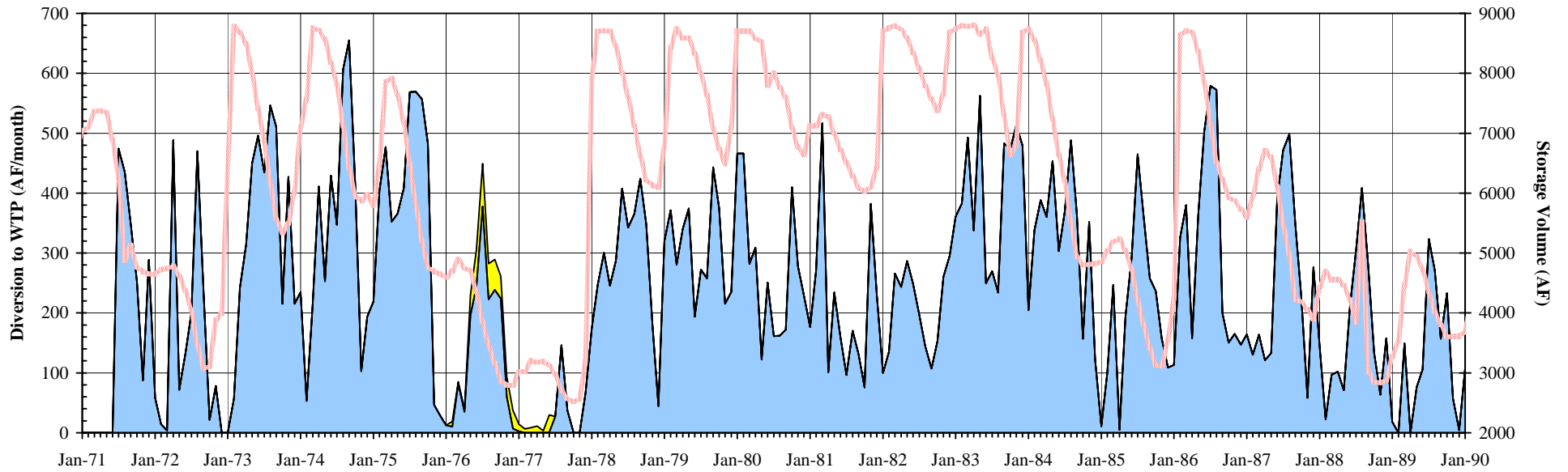
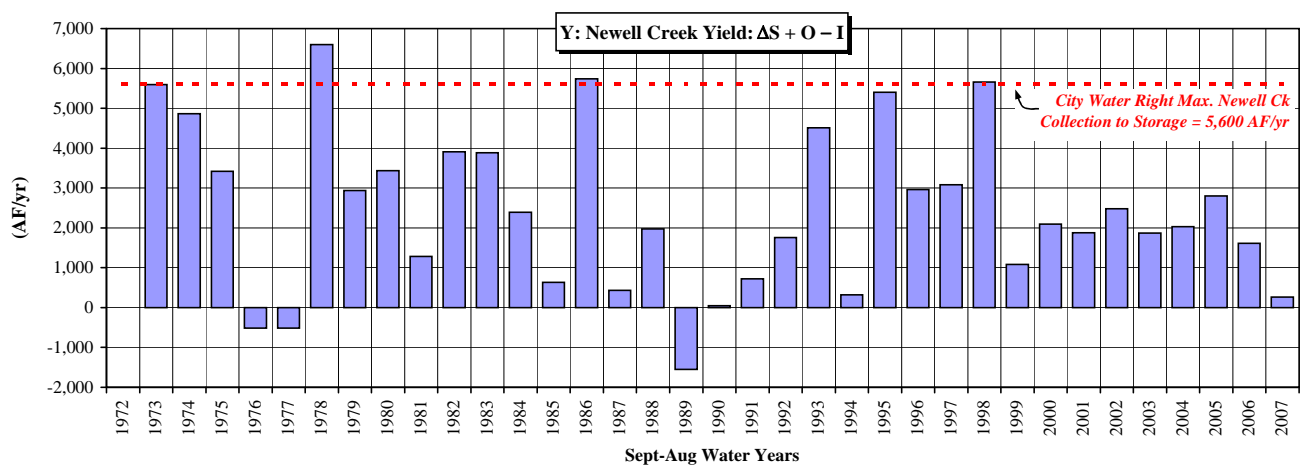
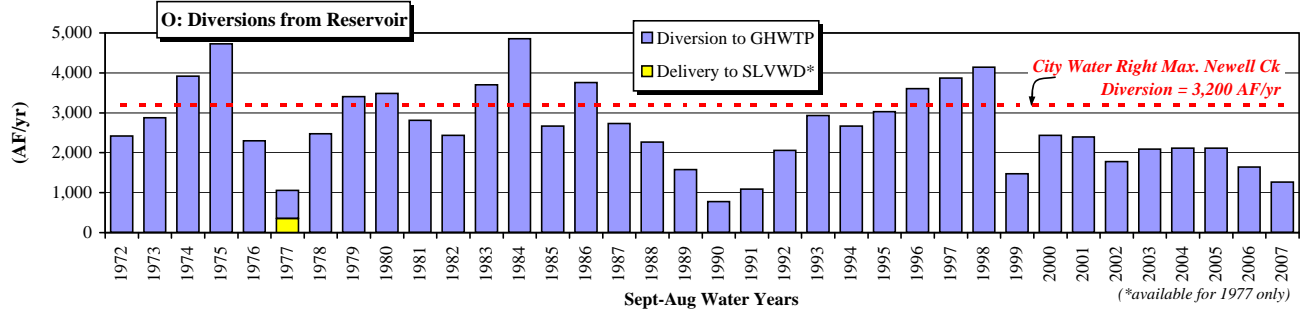
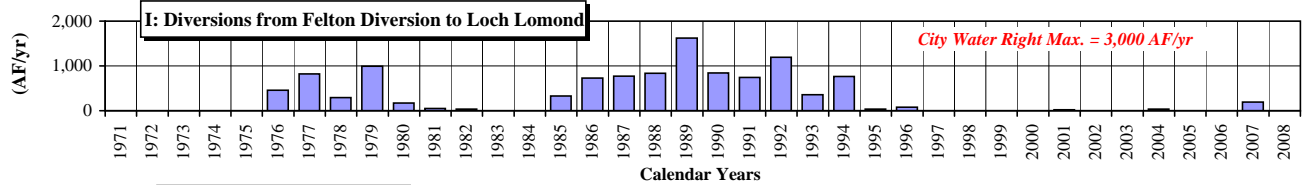
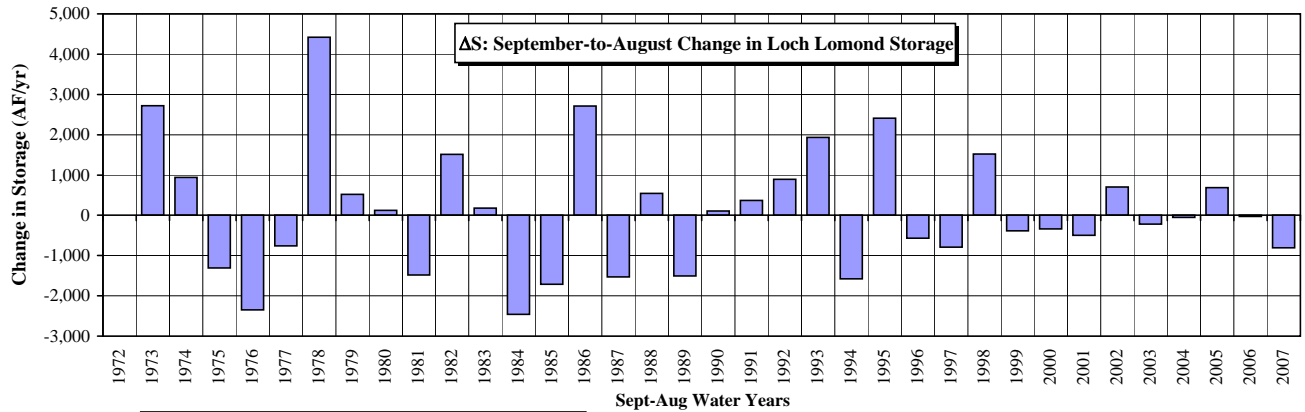
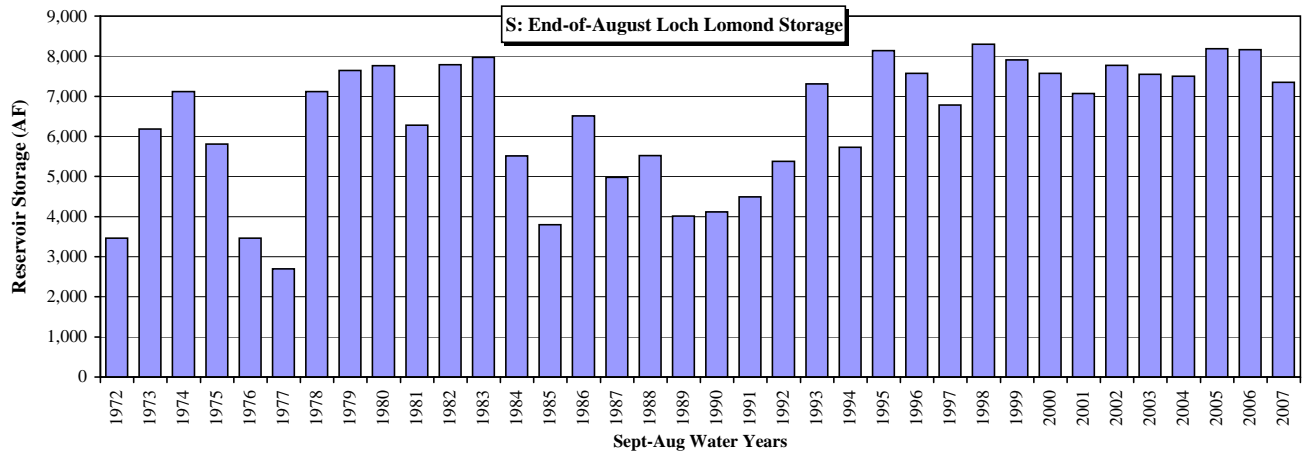


Figure 6-2
Loch Lomond Monthly Elevation and Storage, 1961-2008
 (Source: City of Santa Cruz Water Department)



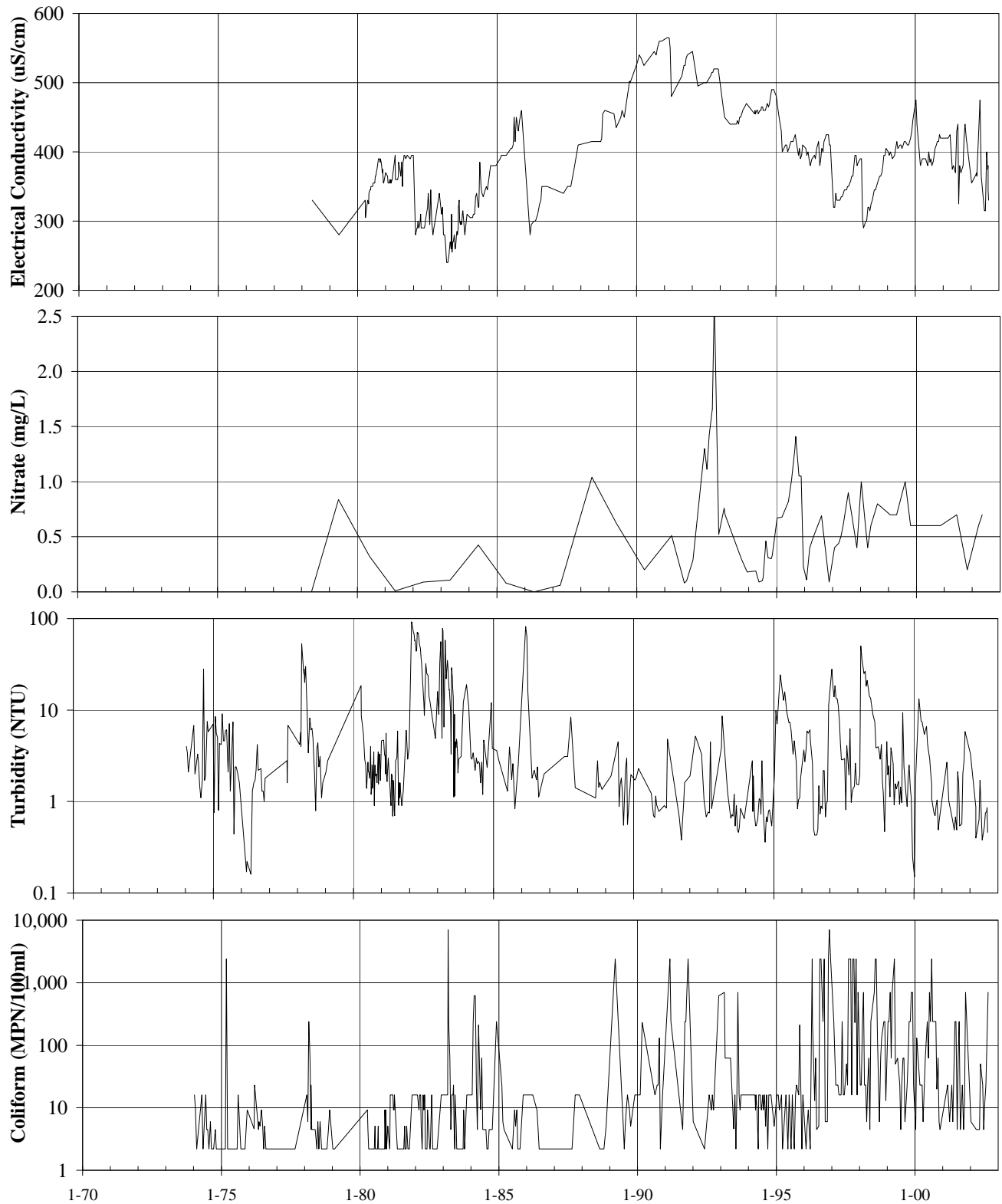
**Although deliveries occurred between 1963 and 1980, only the record for 1976-77 is available.*

Figure 6-3
Loch Lomond Monthly Storage and Production, 1971-2007
 (Source: City of Santa Cruz Water Department)



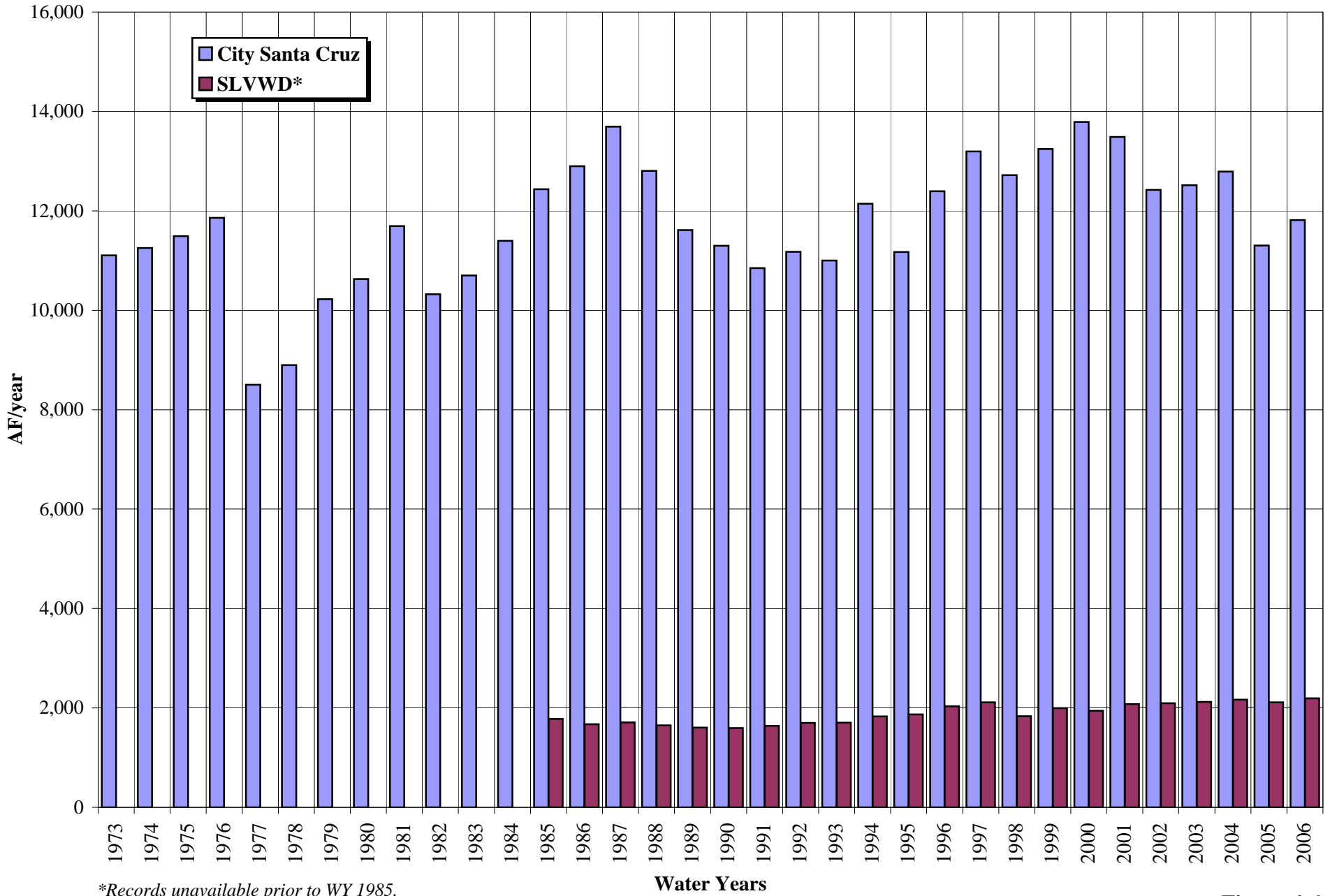
Source: City of Santa Cruz Water Department

Figure 6-4
Loch Lomond Storage and Production, 1971-2007



Source: Johnson, December 2002

Figure 6-5
Loch Lomond Reservoir Water Quality, 1974-2002



*Records unavailable prior to WY 1985.

Figure 6-6
SCCWD and SLVWD Annual Production, WYs 1985-2006

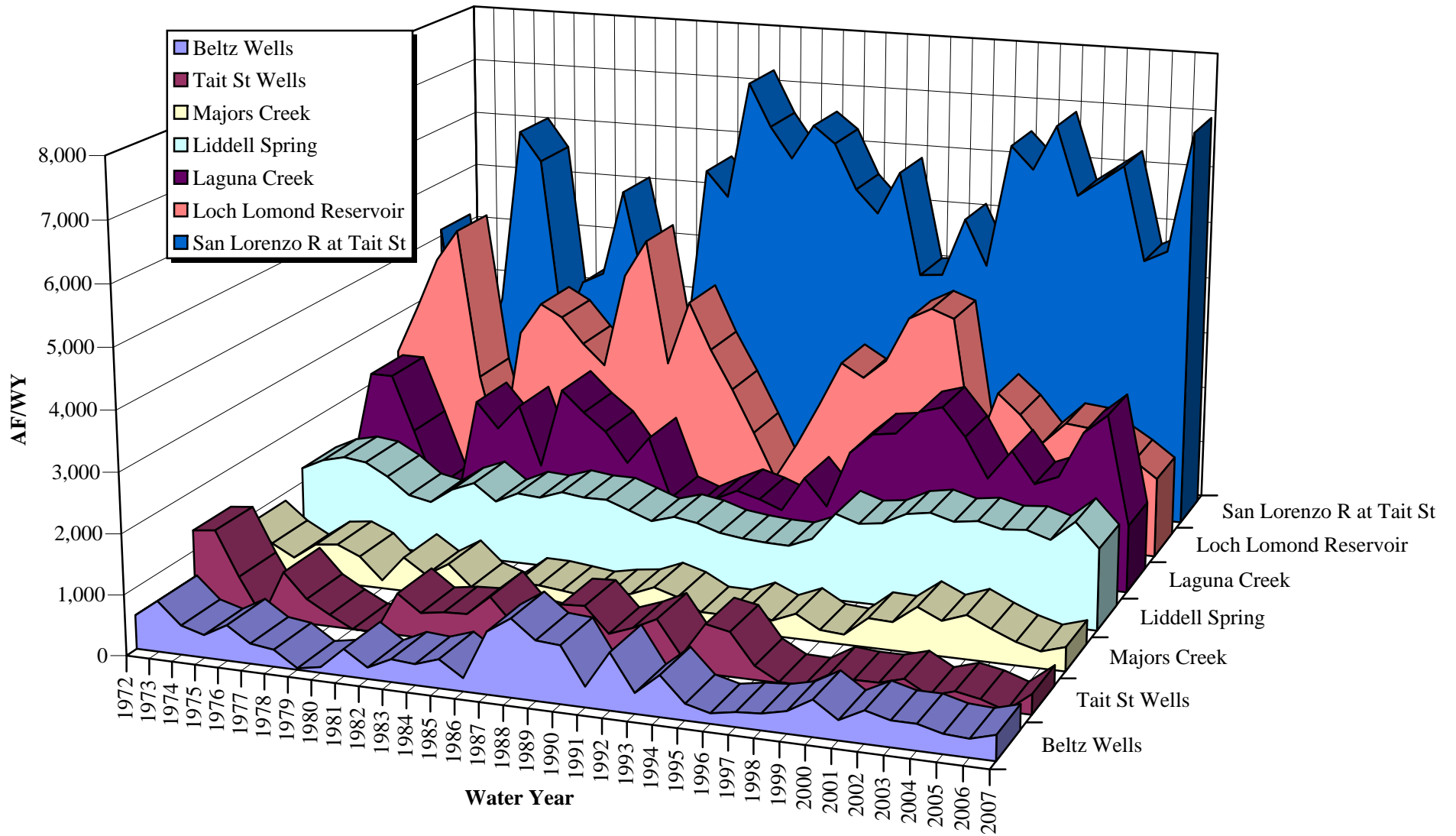


Figure 6-7a
SCCWD Annual Water Production, WYs 1971-2007

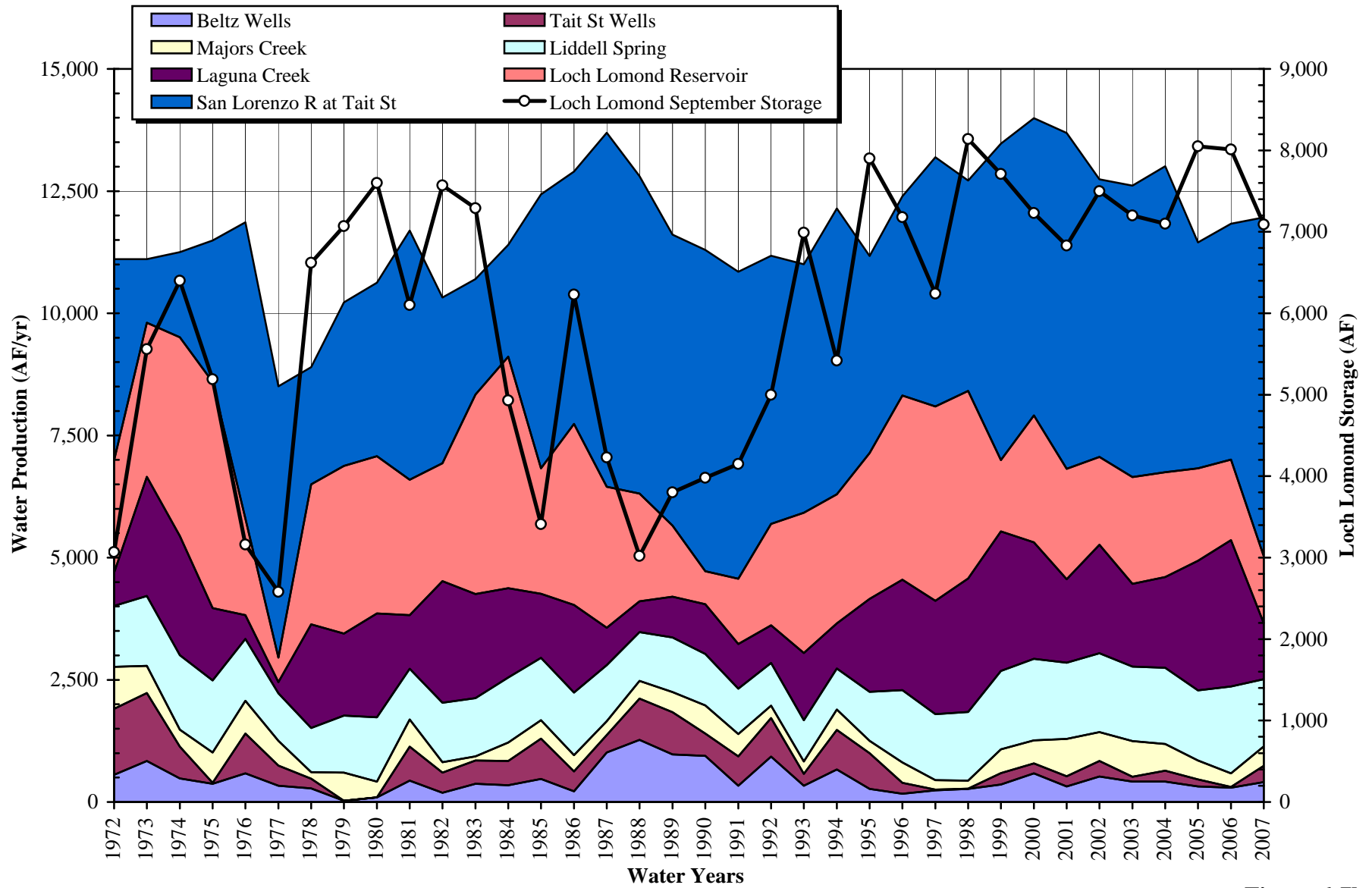


Figure 6-7b
SCCWD Annual Water Production, WYs 1972-2007

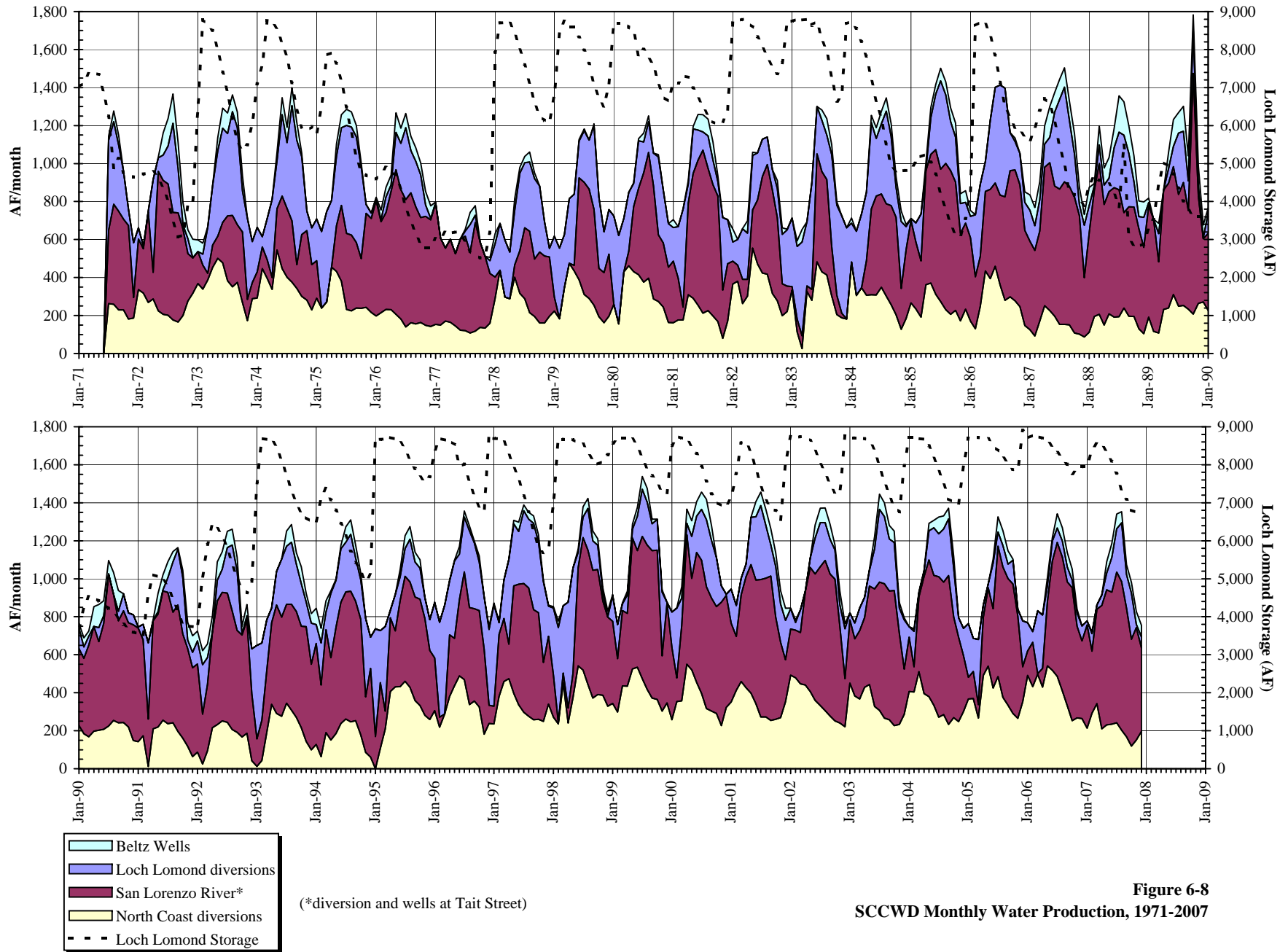
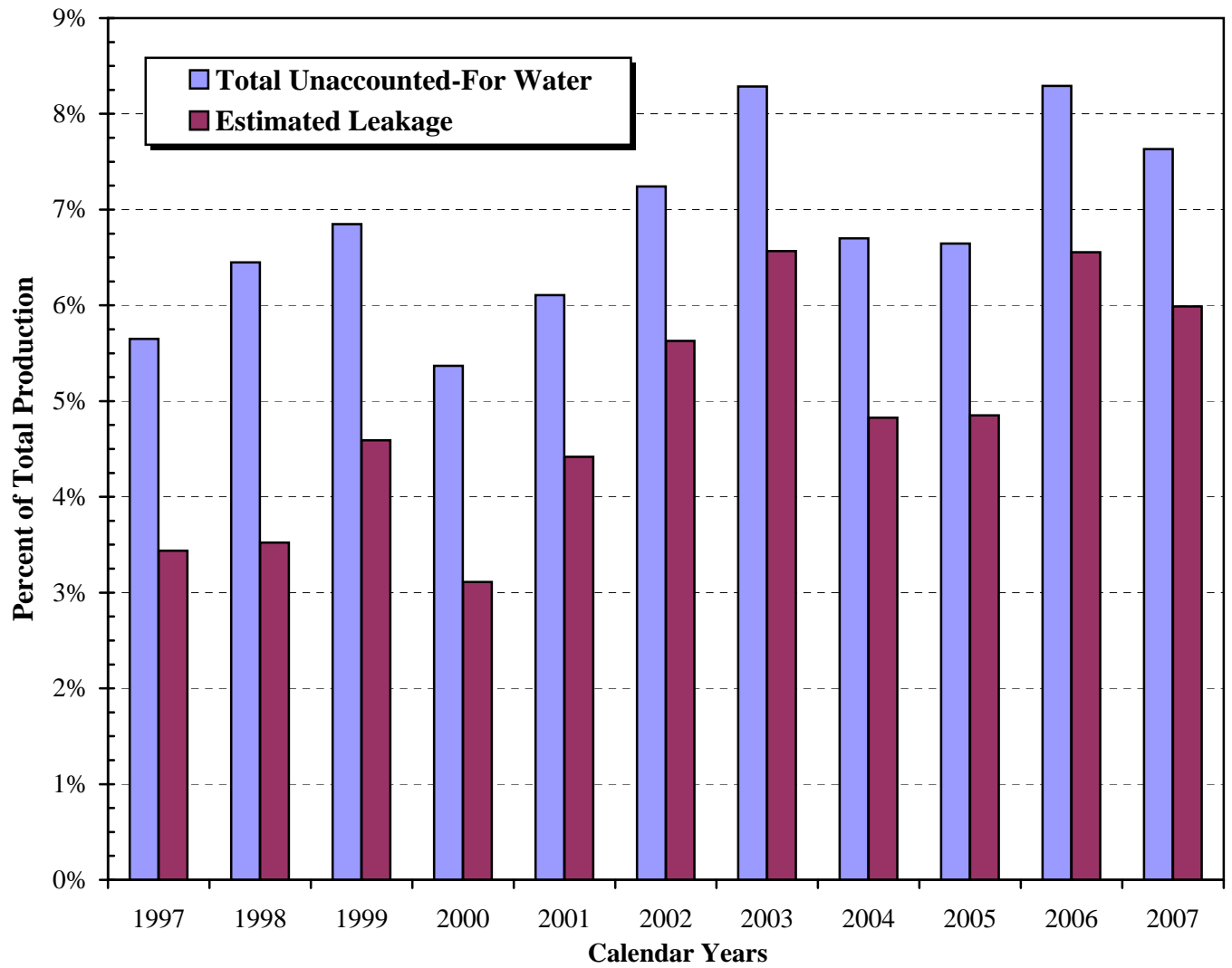


Figure 6-8
SCCWD Monthly Water Production, 1971-2007



Source: see Table 6-4

Figure 6-9
SCCWD Annual Unaccounted-for Treated Water